

Toggle menu
Blue Gold Program Wiki

Navigation

- [Main page](#)
- [Recent changes](#)
- [Random page](#)
- [Help about MediaWiki](#)

Tools

- [What links here](#)
- [Related changes](#)
- [Special pages](#)
- [Permanent link](#)
- [Page information](#)

Personal tools

- [Log in](#)

personal-extra

Toggle search

Search

Random page

Views

- [View](#)
- [View source](#)
- [History](#)
- [PDF Export](#)

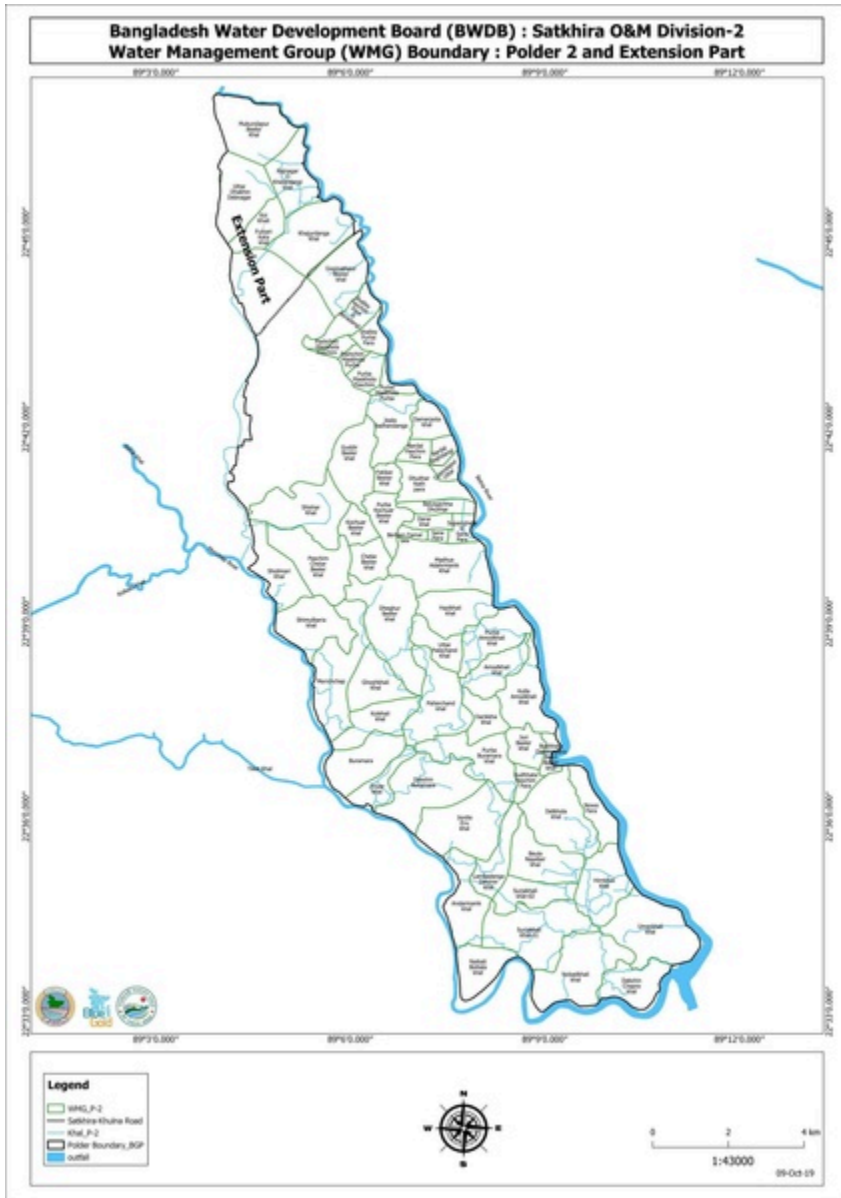
Actions

File:WMGs at polder level 6apr 21.pdf

From Blue Gold Program Wiki

The printable version is no longer supported and may have rendering errors. Please update your browser bookmarks and please use the default browser print function instead.

- [File](#)
- [File history](#)
- [File usage](#)



Go to page



[next page →](#)

Size of this JPG preview of this PDF file: [424 × 600 pixels](#). Other resolution: [170 × 240 pixels](#).

[Original file](#) (2,480 × 3,507 pixels, file size: 6.28 MB, MIME type: application/pdf, 22 pages)

WMGs at polder level


maps-polder

Water Management Group - The basic organizational unit in Blue Gold representing local stakeholders from a hydrological or social unit (para/village). Through Blue Gold, 511 WMGs have been formed and registered. The average WMG covers an area of around 230 ha has 365 households or a population of just over 1,500.

An area of low-lying land surrounded by an earthen embankment to prevent flooding by river or seawater, with associated structures which are provided to either drain excess rainwater within the polder or to admit freshwater to be stored in a khal for subsequent use for irrigation.

File history

Click on a date/time to view the file as it appeared at that time.

| Date/Time | Thumbnail | Dimensions | User | Comment |
|--|---|-----------------------------------|--|---------|
| current 04:45, 20 April 2021 |  | 2,480 × 3,507, 22 pages (6.28 MB) | Saad.chowdhury (talk contribs) | |

You cannot overwrite this file.

File usage

There are no pages that use this file.

Retrieved from

"https://www.bluegoldwiki.com/index.php?title=File:WMGs_at_polder_level_6apr_21.pdf&oldid=4852"

Namespaces

- [File](#)
- [Discussion](#)

Variants

[Category:](#)

- [Maps-polder](#)

This page was last edited on 20 April 2021, at 04:45.

Blue Gold Program Wiki

The wiki version of the Lessons Learnt Report of the Blue Gold program, documents the experiences of a technical assistance (TA) team working in a development project implemented by the Bangladesh Water Development Board (BWDB) and the Department of Agricultural Extension (DAE) over an eight+ year period from March 2013 to December 2021. The wiki lessons learnt report (LLR) is intended to complement the BWDB and DAE project completion reports (PCRs), with the aim of recording lessons learnt for use in the design and implementation of future interventions in the coastal zone.

- [Privacy policy](#)
- [About Blue Gold Program Wiki](#)

- [Disclaimers](#)

Developed and maintained by Big Blue Communications for Blue Gold Program



[Blue Gold Program Wiki](#)