

☐ Toggle menu  
Blue Gold Program Wiki

## Navigation

- [Main page](#)
- [Recent changes](#)
- [Random page](#)
- [Help about MediaWiki](#)

## Tools

- [What links here](#)
- [Related changes](#)
- [Special pages](#)
- [Permanent link](#)
- [Page information](#)

## Personal tools

- [Log in](#)

## personal-extra

☐ Toggle search

Search

Random page

## Views

- [View](#)
- [View source](#)
- [History](#)
- [PDF Export](#)

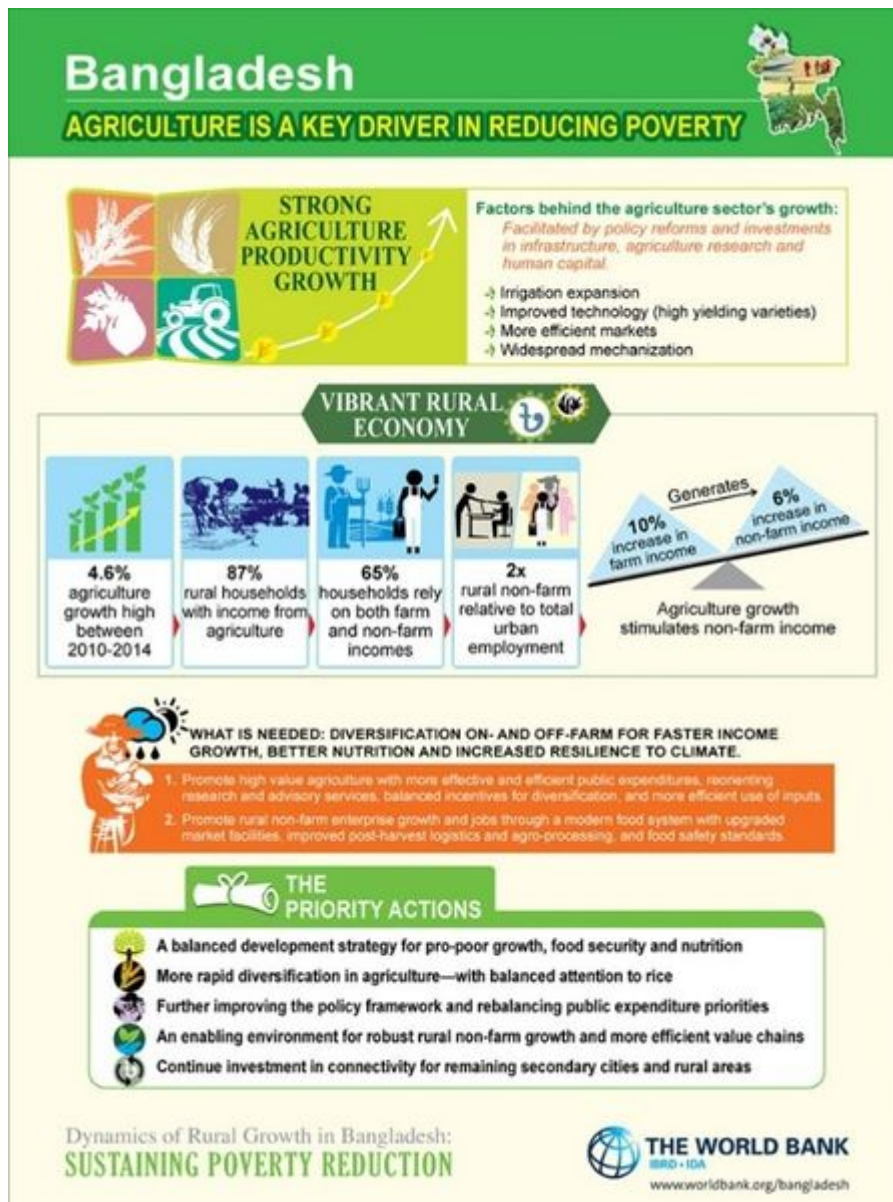
## Actions

# File:Fig21.2.jpg

From Blue Gold Program Wiki

The printable version is no longer supported and may have rendering errors. Please update your browser bookmarks and please use the default browser print function instead.

- [File](#)
- [File history](#)
- [File usage](#)



Size of this preview: [448 × 600 pixels](#). Other resolutions: [179 × 240 pixels](#) | [593 × 794 pixels](#).

[Original file](#) (593 × 794 pixels, file size: 138 KB, MIME type: image/jpeg)

Infographic from World Bank Dynamics of Rural Growth in Bangladesh Report

## File history

Click on a date/time to view the file as it appeared at that time.

Date/Time	Thumbnail	Dimensions	User	Comment
current <a href="#">06:48, 24 March 2021</a>		593 × 794 (138 KB)	<a href="#">Bigblue</a> ( <a href="#">talk</a>   <a href="#">contribs</a> )	

You cannot overwrite this file.

## File usage

The following page uses this file:

- [21 The Evolving Approach to the Commercialization of Agriculture](#)

Retrieved from "<https://www.bluegoldwiki.com/index.php?title=File:Fig21.2.jpg&oldid=4611>"

## Namespaces

- [File](#)
- [Discussion](#)

## Variants

This page was last edited on 24 March 2021, at 06:48.

## Blue Gold Program Wiki

The wiki version of the Lessons Learnt Report of the Blue Gold program, documents the experiences of a technical assistance (TA) team working in a development project implemented by the Bangladesh Water Development Board (BWDB) and the Department of Agricultural Extension (DAE) over an eight+ year period from March 2013 to December 2021. The wiki lessons learnt report (LLR) is intended to complement the BWDB and DAE project completion reports (PCRs), with the aim of recording lessons learnt for use in the design and implementation of future interventions in the coastal zone.

- [Privacy policy](#)
- [About Blue Gold Program Wiki](#)
- [Disclaimers](#)

Developed and maintained by Big Blue Communications for Blue Gold Program



[Blue Gold Program Wiki](#)