

Toggle menu
Blue Gold Program Wiki

Navigation

- [Main page](#)
- [Recent changes](#)
- [Random page](#)
- [Help about MediaWiki](#)

Tools

- [What links here](#)
- [Related changes](#)
- [Special pages](#)
- [Permanent link](#)
- [Page information](#)

Personal tools

- [Log in](#)

personal-extra

Toggle search

Search

Random page

Views

- [View](#)
- [View source](#)
- [History](#)
- [PDF Export](#)

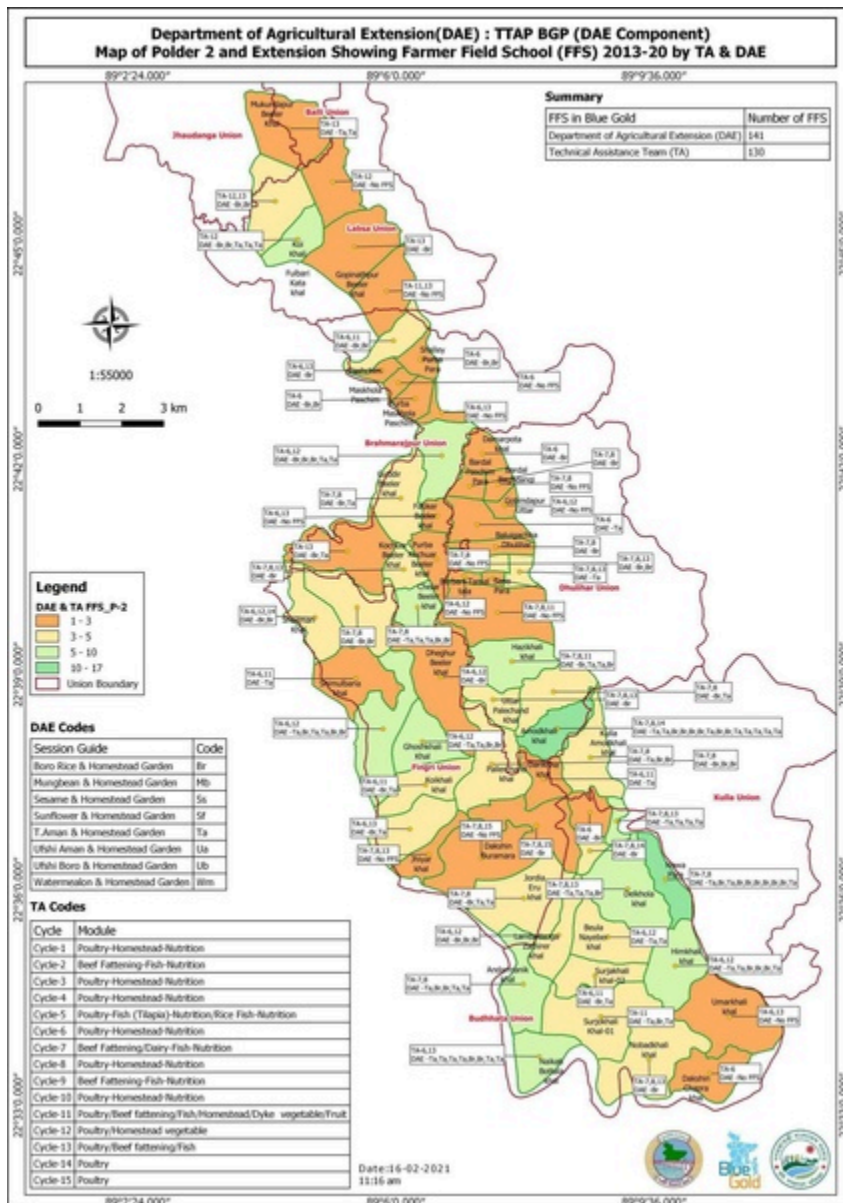
Actions

File:FFS polder maps 7apr 21.pdf

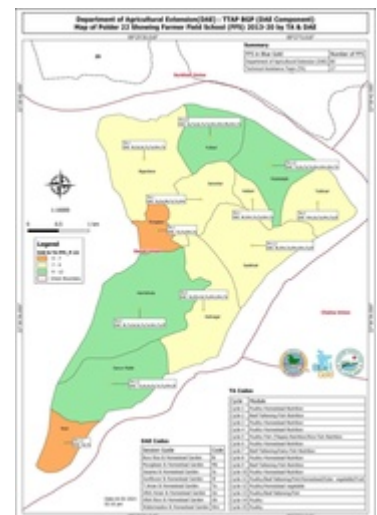
From Blue Gold Program Wiki

The printable version is no longer supported and may have rendering errors. Please update your browser bookmarks and please use the default browser print function instead.

- [File](#)
- [File history](#)
- [File usage](#)



Go to page 1 ▼ Go!



[next page →](#)

Size of this JPG preview of this PDF file: [424 × 600 pixels](#). Other resolution: [169 × 240 pixels](#).

[Original file](#) (1,753 × 2,480 pixels, file size: 8.5 MB, MIME type: application/pdf, 22 pages)

FFS - Farmer Field Schools

maps-polder

Farmer Field School - A group-based learning process through which farmers carry out experiential learning activities that help them to understand the ecology of their fields, based on simple experiments, regular field observations and group analysis. The knowledge gained from these activities enables participants to make their own locally specific decisions about crop management practices. This approach represents a radical departure from earlier agricultural extension programmes, in which farmers were expected to adopt generalized recommendations that are formulated by specialists from outside the community.

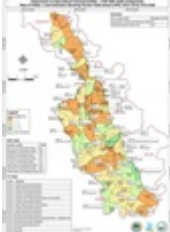
Farmer Field School - A group-based learning process through which farmers carry out experiential

learning activities that help them to understand the ecology of their fields, based on simple experiments, regular field observations and group analysis. The knowledge gained from these activities enables participants to make their own locally specific decisions about crop management practices. This approach represents a radical departure from earlier agricultural extension programmes, in which farmers were expected to adopt generalized recommendations that are formulated by specialists from outside the community.

An area of low-lying land surrounded by an earthen embankment to prevent flooding by river or seawater, with associated structures which are provided to either drain excess rainwater within the polder or to admit freshwater to be stored in a khal for subsequent use for irrigation.

File history

Click on a date/time to view the file as it appeared at that time.

Date/Time	Thumbnail	Dimensions	User	Comment
current 04:48, 20 April 2021		1,753 × 2,480, 22 pages (8.5 MB)	Saad.chowdhury (talk contribs)	

You cannot overwrite this file.

File usage

There are no pages that use this file.

Retrieved from

"https://www.bluegoldwiki.com/index.php?title=File:FFS_polder_maps_7apr_21.pdf&oldid=4856"

Namespaces

- [File](#)
- [Discussion](#)

Variants

[Category](#):

- [Maps-polder](#)

This page was last edited on 20 April 2021, at 04:50.

Blue Gold Program Wiki

The wiki version of the Lessons Learnt Report of the Blue Gold program, documents the experiences of a technical assistance (TA) team working in a development project implemented by the Bangladesh Water Development Board (BWDB) and the Department of Agricultural Extension (DAE) over an eight+ year period from March 2013 to December 2021. The wiki lessons learnt report (LLR) is intended to complement the BWDB and DAE project completion reports (PCRs), with the aim of recording lessons learnt for use in the design and implementation of future interventions in the coastal zone.

- [Privacy policy](#)
- [About Blue Gold Program Wiki](#)
- [Disclaimers](#)

Developed and maintained by Big Blue Communications for Blue Gold Program



[Blue Gold Program Wiki](#)