



Bangladesh Water Development Board (BWDB)



Kingdom of the Netherlands



Department of Agricultural Extension (DAE)



Working Paper 8 Participatory Monitoring

April-May 2017



Working Paper 8

Participatory Monitoring

April-May 2017

Blue Gold Program

BWDB Office

23/1 Motijheel Commercial Area, Hasan Court, 8th Floor, Dhaka 1000

(T) +88 02 711 15 25; +88 02 956 98 43

Gulshan Office

KarimManjil, Ground Floor, House 19, Road 118, Gulshan, Dhaka 1212

(T) +88 02 989 45 53



Green corner – Save a tree today!

Mott MacDonald is committed to integrating sustainability into our operational practices and culture. As a world leading consultancy business we are always seeking to improve our own performance and reduce the environmental impact of our business. Meanwhile, many of our staff are committed to living sustainably in their personal lives – as an employee-owned company Mott MacDonald shares their concerns. We feel an ethical obligation to reduce our emissions and resource use and have committed to reducing our per capita carbon footprint by a minimum of 5% year on year.

We print our reports and client submissions using recycled, double-sided paper. Compared to printing single sided on A4 virgin paper, double sided printing on recycled paper saves the equivalent of two trees, over a ton of CO₂ and a cubic metre of landfill space for every 100 reams. By choosing the greener path we have been able to achieve efficiencies benefiting both Mott MacDonald and our customers.

We would like to share some of the principles of our own 'Going Green' initiative:

- When possible we scan rather than print and consider what really needs to be on paper
- We use electronic faxing when practicable
- We work on e-forms
- We use recycled paper when possible
- Reducing paper in the office creates a better working environment for our staff and our clients

We believe that you, as one of our esteemed clients, will share our concern to conserve precious resources for the benefit of our planet and its inhabitants.

Issue and revision record

Revision	Date	Originator	Checker	Approver	Description
V1	07/09/2017	MRL Team			
V2	15/10/2017	MRL Team			
V3	31/10/2017	MRL Team			
V4	20/11/2017	MRL/Zonal Teams		Guy Jones	Issued

Working Papers are intended to explore the issues surrounding a particular aspect of the project (eg gender, BGP exit strategy, polder development planning, roles and functions of WMO organisations, water management, communications) in a form which allows discussion and comment within the project whilst remaining as a working draft - but with the eventual aim of issuing as a Technical or Thematic Report when the process of internal interrogation and refinement has resulted in a product which has wider application. A WP is not intended to be an action plan or progress report, but a discussion of issues and processes and the reasons behind what we are doing in the project.

This document is issued for the party which commissioned it and for specific purposes connected with the above-captioned project only. It should not be relied upon by any other party or used for any other purpose.

We accept no responsibility for the consequences of this document being relied upon by any other party, or being used for any other purpose, or containing any error or omission which is due to an error or omission in data supplied to us by other parties

This document contains confidential information and proprietary intellectual property. It should not be shown to other parties without consent from us and from the party which commissioned it.

Content

Chapter	Title	Page
	List of Abbreviations	iii
	Executive Summary	iv
1.	Introduction	1
1.1	Background to Blue Gold Program _____	1
1.2	Purpose of Participatory Monitoring _____	1
2.	Methodology	2
2.1	Participatory Monitoring Tool _____	2
2.2	Participatory monitoring exercise _____	3
2.3	Reflection on participatory monitoring results _____	3
2.4	Limitations _____	3
3.	Project Overview	4
3.1	Present Status of WMGs _____	4
3.2	Characteristics of WMGs of different performance levels _____	5
3.2.1	Characteristics of WMGs with ‘High Performance’ _____	6
3.2.2	Characteristics of WMGs with ‘Upper Medium Performance’ _____	6
3.2.3	Characteristics of WMGs with ‘Medium Performance’ _____	7
3.2.4	Characteristics of WMGs with ‘Upper Low Performance’ _____	8
3.2.5	Characteristics of WMGs with ‘Low Performance’ _____	8
4.	Polder Overview	9
4.1	Polder 22 _____	9
4.2	Polder 29 _____	11
4.3	Polder 30 _____	16
4.4	Polder 43/1A _____	20
4.5	Polder 43/2A _____	22
4.6	Polder 43/2B _____	24
4.7	Polder 43/2D _____	27
4.8	Polder 43/2E _____	30
4.9	Polder 43/2F _____	32
4.10	Polder 2 _____	35
4.11	Polder 26 _____	40
4.12	Polder 31 Part _____	42
4.13	Polder 55/2A _____	44
4.14	Polder 55/2C _____	46
4.15	Trends over time _____	48

5.	Final Remarks	49
----	---------------	----

Annexes

Annex-1: Outcome Challenges and Progress Markers	43
Annex-3: Glossary.....	53

List of Abbreviations

BGP	Blue Gold Program
BWDB	Bangladesh Water Development Board
EC	Executive Committee
FFS	Farmer Field School
MFS	Market Oriented Farmer Field School
MRL	Monitoring, Reflection and Learning
O&M	Operation and Maintenance
PM	Participatory Monitoring
ToT	Training of Trainers
WM	Water Management
WMA	Water Management Association
WMG	Water Management Group
WMO	Water Management Organization

Executive Summary

1. This was the second round of participatory monitoring by WMGs. A total of 351 WMGs of 14 polders conducted participatory monitoring exercise. The WMGs assessed their progress vis-à-vis 20 outcome challenges under 4 themes and indicated their progress by using scores signifying progresses achieved.
2. Basing on the scores they gave against the outcome challenges, performance levels of the WMGs have been determined; from the results of participatory monitoring it appears that the WMGs fall in 5 performance categories: high, upper medium, medium, upper low and low categories.
3. It is noteworthy that performance levels of about 66% of the total number of WMGs are medium or higher, WMGs of high performance level being 1.4%. It may further be noted that if only the WMGs of the first 9 polders are considered the percentage of WMGs with medium or higher level performance goes higher (74%).

The main characteristics of high performance WMGs include active participation in operation and maintenance of water management infrastructures, engagement in collective actions, linkages with service providers and adoption of modern agricultural technologies.

4. As per their self-assessment, the progress/achievements of WMGs have been quite remarkable in some polders of BGP Khulna Zone. Polder 30 has got the highest number of WMGs of high performance level; all other WMGs of this polder, except one, belong to medium or upper medium performance group. All WMGs of two other polders of Khulna Zone – Polders 22 and 29 – belong to medium or higher performance levels.

In BGP Patuakhali Zone the WMGs in general seem to have reported rather conservative achievements. It is only in Polder 43/2E that all WMGs have reported to belong to medium or higher performance categories.

5. The results show that in general there has been an improvement in the performance of WMGs. In the 2nd round of participatory monitoring the overall average achievements of WMGs of all 14 polders are slightly higher than that of the 1st round participatory monitoring.

1. Introduction

1.1 Background to Blue Gold Program

Blue Gold Program (BGP) contributes to ‘reducing poverty in coastal polders by creating a healthy living environment and a sustainable socio-economic development’¹. To this end the program sets up two types of activities: water management support activities and agriculture and marketing support activities. Water management support activities include development and repair of infrastructures of selected polders and strengthening of water management partnerships, while agriculture and marketing support activities include introduction of new practices and innovations in agriculture and strengthening agriculture and marketing actors.

The project activities are expected to bring systemic changes in the existing situation. Water management support activities will stimulate equitable water management, where water management partnerships will be active so that water resources are managed effectively. On the other hand, the agriculture and marketing support activities will generate strengthened value chains, where farmers will harvest higher and diversified productions by adopting new technologies and practices with support from agricultural extension services and will develop market linkages. This is the outcome level in the results chain leading towards the ultimate target of Blue Gold Program.

Because changes at impact level and eventually at goal level will only occur if they are sustained at outcome level, monitoring is carried out at outcome level. Outcome mapping is necessary to see whether the expected changes are taking place, and whether they are developing into sustainable changes.

1.2 Purpose of Participatory Monitoring

Within Blue Gold, participatory monitoring encourages water management groups (WMGs) to be aware of the potential targets for their development and to evaluate their progress (or shortcomings) towards a full achievement. Based on their monitoring results, the WMGs can also make their own plan of actions to sustain progresses achieved and to improve further.

¹Inception Report, Blue Gold Program, 2013.

2. Methodology

2.1 Participatory Monitoring Tool

A total of 20 outcome challenges, under four themes, have been identified as monitoring parameters for outcome monitoring by WMGs (see **Annex 1**)². The four themes are:

- (a) establishment of water management group (WMG) and water management partnership,
- (b) agriculture and economic development,
- (c) community participation in planning, implementation and use of water management infrastructures, and
- (d) water management and operation and maintenance (O&M) of infrastructure.

The achievement of the WMGs against each of the twenty outcome challenges is ranked on a scale of four progress levels:

- 0 = No progress
- 1 = Limited progress
- 2= Improved progress
- 3 = Full achievement

Each of the four progress levels is provided with a simple and clear definition, i.e. progress marker (in Bangla) so that WMGs can distinguish through internal discussion which level they have achieved with reasons. The progress markers provide definitions of a set of idealized targets for WMGs. Monitoring by the WMGs of the progress achieved towards these targets then generate firsthand information on the systemic changes, which can in turn be used to plan appropriate actions.

A glossary has also been developed to explain the intended meanings of specific words and phrases (see Annex 2). A by-product of these common definitions is that comparisons can be made of the relative progress of different WMGs.

² For subsequent surveys, a number of the twenty outcome challenges and themes have been revised to reinforce the functionality indicators now used across Blue Gold, and to overcome some particular problems or confusions eg to remove references to MFS outcome challenges since we have not held MFSs in all polders. Due to the changes in the outcomes challenges, subsequent editions of this report will not be able to represent 'progress over time' in the immediate future - as presented in Section **Error! Reference source not found.** of this report.

2.2 Participatory monitoring exercise

A total of 351 WMGs participated in the participatory monitoring exercise; 4 WMGs (1 each from Polders 29 and 43/2D, and 2 from Polder 43/2B) that participated in the last participatory monitoring exercise did not participate in the exercise this time while 1 additional WMG of Polder 43/2A participated in the monitoring exercise. CDFs were present in the participatory monitoring sessions of WMGs for in case the latter required any clarifications of monitoring format.

The WMGs assessed their progress vis-à-vis 20 outcome challenges under 4 themes. They discussed thoroughly the outcome challenges and progress markers and marked their achievements/ progress levels by putting scores.

2.3 Reflection on participatory monitoring results

After the results of participatory monitoring were analyzed, the MRL Team shared the results with all polder teams in separate meetings and reviewed/reflected upon the results together. The polder teams gave their views on the assessment of WMGs about their own progress. The polder teams also discussed the strengths and weaknesses of WMGs of different performance levels, and thus the areas needing attention for further improvement of WMGs were identified.

2.4 Limitations

- A number of CDFs who looked after WMGs in different polders are not there anymore – they have been transferred to other polders –so that reflection on participatory monitoring results was not fully supported.
- It was an idea that participatory monitoring results would be discussed and reflected upon by WMGs in their monthly meetings, which would be followed up by CDFs, but for the last participatory monitoring results this did not happen in most cases.

3. Project Overview

3.1 Present Status of WMGs

The performance levels of WMGs have been determined on the basis of their self-assessment. Based on the scores they gave against the outcome challenges, the WMGs have been categorized into 5 performance categories:

High performance	= average score being $\geq 80\%$
Upper medium performance	= average score being $>70\%$ but $<80\%$
Medium performance	= average score being $>60\%$ but $<70\%$
Upper low performance	= average score being $>50\%$ but $<60\%$
Low performance	= average score being $<50\%$

It may be noted that “missing values” in the score sheets of WMGs have not been counted in percentage calculation.

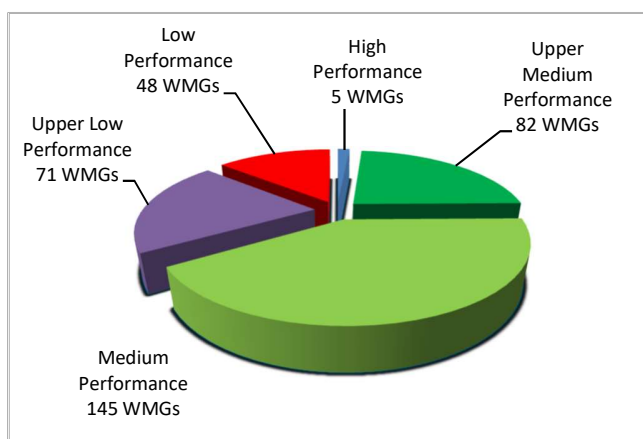
The following table shows the numbers of WMGs falling under different performance levels by polder.

Performance levels	No. of WMGs categorized as per performance levels														
	2	22	26	29	30	31 Part	43/ 1A	43/ 2A	43/ 2B	43/ 2D	43/ 2E	43/ 2F	55/ 2A	55/ 2C	All polders
High Performance	0	0	0	1	4	0	0	0	0	0	0	0	0	0	5
Upper Medium Performance	2	6	4	30	23	8	0	0	2	7	0	0	0	0	82
Medium Performance	29	6	10	24	12	4	5	11	6	17	12	9	0	0	145
Upper Low Performance	21	0	1	0	1	0	6	8	16	4	0	12	2	0	71
Low Performance	6	0	0	0	0	0	3	3	2	0	0	6	12	16	48
Total	58	12	15	55	40	12	14	22	26	28	12	27	14	16	351

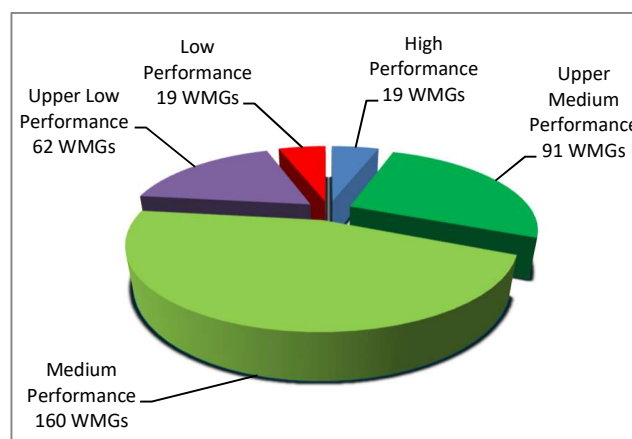
The detailed results of self-assessment by WMGs are given polder-wise in Sections 4. The polder teams by and large agree with the results of self-assessment by the WMGs. The difference between WMG self-assessment and polder teams' assessment is shown in the following table; details of the variations are shown in Section 4.

Performance levels	No. and percentage of WMGs belonging to performance groups			
	Self-assessment by WMGs		Assessment by Polder Teams	
	No.	%	No.	%
High Performance	5	1.4%	19	5.4%
Upper Medium Performance	82	23.4%	91	25.9%
Medium Performance	145	41.3%	160	45.6%
Upper Low Performance	71	20.2%	62	17.7%
Low Performance	48	13.7%	19	5.4%

The charts below show the distribution of 351 WMGs in performance categories.



Self-assessment by WMGs



Polder Team's Assessment

It is noteworthy that performance levels of about 66% of the total number of WMGs are medium or higher as per WMGs' self-assessment, and about 77% as per assessment of Polder Teams. It may further be noted that if only the WMGs of the first 9 polders are considered the percentage of WMGs with medium or higher-level performance goes higher – 74% as per WMGs' self-assessment and 82% as per assessment of Polder Teams; according to polder teams, as can be seen in the table above, the number of 'high performing' WMGs and WMGs of 'Upper Medium Performance' are more than what WMGs themselves have reported. From discussions with some WMGs that rate their achievements lower than the 'actual', it appears that they do not want to be 'content' with their performance/achievements – they want to go much further in their accomplishment or lest they become lethargic if they rate their performance high.

3.2 Characteristics of WMGs of different performance levels

The major characteristics of WMGs belonging to different 'performance groups', as identified by polder teams, are as follows. However, all characteristics of a certain 'performance group', as narrated below, may not apply to all WMGs of that group equally.

3.2.1 Characteristics of WMGs with ‘High Performance’

Strengths

- They do water management activities regularly
 - Operate sluice well
 - They try to address the demands of both highland and lowland
 - They make provision of fresh water for crops, stopping saline water intrusion (in Khulna area)
- They do maintenance of infrastructures
 - Greasing of sluice gate
 - Small repair of sluice
 - Small repairs of embankment (repair of ghoghs/piping)
 - Cleaning of khal (fishing traps, water-hyacinth)
- General members/local people participate in operation of infrastructures; they give labour and materials as and when necessary
- They have begun to create O&M fund
- They have formulated WMG Action Plan (WAP), review it from time to time and implement it
- They hold monthly meetings regularly
- They maintain records well and update them regularly; they do so independently at their own initiative.
- They have collective actions
 - Purchase of agricultural inputs – seeds, pesticides
 - Selling of agricultural products like rice, sesame
- They have good linkages with service providers – BWDB, DAE, DLS, DoF
 - Have good linkage with BWDB – can contact XEN whenever there is a need
 - SAAO of DAE frequently visits farmers of WMG area
 - Sometimes they get fund from DAE, e.g. for IPM
- They maintain linkages with UP and NGOs active in the area; sometimes they get fund from UP
- The members of the WMG are adopting modern agricultural technologies: the cropping intensity has begun to increase; new crops (for polder area) or improved varieties are cultivated by them, including sweet gourd, sunflower, water-melon, okra/ladies finger, moringa, mung bean Bari 6; adopting improved technologies of poultry rearing and fish cultivation.
- The WMGs have acceptance in the area; people of the area consult WMG while taking important decisions

Areas needing improvement

- They need to improve further the efforts for collective actions
- They need to improve further leadership quality/efficiency of Executive Committees

3.2.2 Characteristics of WMGs with ‘Upper Medium Performance’

Strengths

- They take initiative for O&M of infrastructures;
 - they operate sluice of there are using labour and cash when required

- They clean khals (fish-traps, silt, water-hyacinth)
- They do small repairs of embankment
- they collect O&M fund from members
- They have good leadership; they have monthly meetings regularly & they have very good participation in them; they update their books of accounts and records without being told by CDF
- They are capable of WAP formulation and updating though needing improvement in this regard
- Women participate actively in WMG activities
- They have savings
- WMG has good linkages with BWDB, DAE and UP
- Adoption of improved agricultural technologies has started like use of seeds of improved varieties (mung beans, rice), use of fertilizers, improved technology of poultry rearing
- They try to put into practice the FFS learnings and they spread the learnings among other farmers
- They have some collective actions: purchase of agricultural inputs, selling agricultural products jointly, hiring tractor/power-tiller jointly for ploughing of land

Areas needing improvement

- They need to engage in more collective actions
- They need to give more emphasis on adoption of modern agricultural technologies and IGAs
- They need to pursue improvement of water management system, coordinating water requirements of highland and lowland
- They need to strengthen WAP formulation and implementation

3.2.3 Characteristics of WMGs with ‘Medium Performance’

Strengths

- They do O&M at own initiative
 - They operate water management infrastructure
 - They do small repairs of embankment
 - They do some maintenance of water management infrastructure, like greasing
 - They try to keep their khals clear
 - They have begun to create O&M fund
- They hold monthly meetings regularly with good participation of EC members, including women
- They follow-up decisions of meetings
- Water management issues are discussed in the meetings and they try for good water management in the area
- Their books of records are updated – they update them on their own; they can write resolutions of the meetings
- They have savings collection
- They try to put into practice the FFS learning, e.g. the new technologies in poultry rearing, use of seeds of improved varieties, use of fertilizers
- They have begun doing collective actions

Areas needing improvement

- Not all EC members are active, and women participation in WMG activities is limited

- Weak in WAP formulation and implementation
- O&M fund not created
- Organizational Management training should be provided
- No or very little collective action
- Record keeping is not done so well
- WMG members are not well-motivated for water management
- No good linkage with UP, DAE and other service providers.
- WMG is weak in record keeping; it still requires support from BGP staff
- Unwillingness/less interest to adopt new agricultural technologies

3.2.4 Characteristics of WMGs with ‘Upper Low Performance’

It is difficult to list down common characteristics of WMGs of ‘Upper Low Performance’ category. The WMGs of this performance group do not have or have very few analogous strengths and weaknesses. While some are strong on certain aspects, others are weak on those aspects and vice versa.

It may be noted that a number of WMGs of this performance category are from the new polders; these WMGs have just begun their journey to achieving potential targets for their development; it will be unfair to put them on the same scale with the old WMGs belonging to this category. Generally speaking, the WMGs of this performance category in new polders are getting themselves organized, gradually taking on responsibilities of O&M of infrastructures and adopting modern agricultural technologies. It may further be noted that these WMGs have not got basic trainings yet.

3.2.5 Characteristics of WMGs with ‘Low Performance’

The WMGs of this category have no or little positive traits/strengths to mention. A number of WMGs of this performance category too are from the new polders; they have just begun their journey to achieving potential targets for their development. Their progress may not be compared with the progress of relatively old WMGs belonging to this category.

4. Polder Overview

Polder-wise results of participatory monitoring are given below.

4.1 Polder 22

As per their own assessment, all the WMGs of this polder belong to Medium and Upper Medium Performance groups. Since this is one of the old polders, one would expect to see at least one or two WMGs of High Performance category. According to Polder Team, the monitoring results reflects more or less a true picture of WMGs' performance levels; only for Hatbari WMG, the Polder Team feels that its scoring has been conservative – in effect, Hatbari is a good performing WMG.

Sl. No.	Name of WMG	Theme-wise Progress of WMGs on a Scale of 0 to 3 Progress Levels (and in %)					Level of WMG performance	
		Average score (Out of max. score 3)	Establishment of Water Management Group and Water Management Partnership	Agriculture and economic development	Community participation in planning, implementation and use of water management infrastructures	Water Management and Operation and Maintenance (O&M) of Infrastructures	Self-assessment by WMGs	Polder Team's Assessment (indicated where it differs)
1	Fulbari	2.25	2.36 (78.57%)	2.33 (77.78%)	2.17 (72.22%)	2.00 (66.67%)	Upper Medium	
2	Sayedkhali	2.23	2.29 (76.19%)	2.50 (83.33%)	2.00 (66.67%)	1.88 (62.50%)	Upper Medium	
3	Hatbari	2.15	2.36 (78.57%)	2.08 (69.44%)	2.00 (66.67%)	2.00 (66.67%)	Upper Medium	
4	Telikhali	2.15	2.43 (80.95%)	2.00 (66.67%)	2.00 (66.67%)	2.00 (66.67%)	Upper Medium	

Sl. No.	Name of WMG	Theme-wise Progress of WMGs on a Scale of 0 to 3 Progress Levels (and in %)					Level of WMG performance	
		Average score (Out of max. score 3)	Establishment of Water Management Group and Water Management Partnership	Agriculture and economic development	Community participation in planning, implementation and use of water management infrastructures	Water Management and Operation and Maintenance (O&M) of Infrastructures	Self-assessment by WMGs	Polder Team's Assessment (indicated where it differs)
5	Bigordana	2.13	2.43 (80.95%)	1.92 (63.89%)	2.00 (66.67%)	2.00 (66.67%)	Upper Medium	
6	Horinkhola	2.10	2.36 (78.57%)	1.75 (58.33%)	2.00 (66.67%)	2.25 (75.00%)	Upper Medium	
7	Darunmollik	2.08	2.29 (76.19%)	1.17 (38.89%)	2.00 (66.67%)	2.13 (70.83%)	Medium	
8	Gopipagla	2.05	2.07 (69.05%)	2.08 (69.44%)	2.00 (66.67%)	2.00 (66.67%)	Medium	
9	Durgapur	2.03	2.14 (71.43%)	1.92 (63.89%)	2.00 (66.67%)	2.00 (66.67%)	Medium	
10	Senerber	2.03	2.14 (71.43%)	2.08 (69.44%)	1.83 (61.11%)	1.88 (62.50%)	Medium	
11	Noai	2.00	2.14 (71.43%)	1.17 (38.89%)	2.00 (66.67%)	2.00 (66.67%)	Medium	
12	Kalinagor	1.80	2.00 (66.67%)	1.83 (61.11%)	1.67 (55.56%)	1.50 (50.00%)	Medium	

4.2 Polder 29

As per their own assessment, all 55 WMGs of this polder belong to medium or higher performance groups - 1 WMG of high performance category, 30 WMGs of upper medium performance category and 24 WMGs of medium category; the upper medium and high performance categories account for 56% of the total number of WMGs. Polder Team generally agrees to the scoring of WMGs. However, though they fall under medium or upper medium categories, many WMGs put low scores with respect to agriculture and economic development; thus this is the area where special attention should be given. Gojendrapur Uttar WMG, which has categorized itself as high performance category WMG, has some weaknesses like personality conflict between the President and Secretary of the WMG, and it does not have good relations with the UP Chairman because of political reasons.

Sl. No.	Name of WMG	Theme-wise Progress of WMGs on a Scale of 0 to 3 Progress Levels (and in %)					Level of WMG performance	
		Average score (Out of max. score 3)	Establishment of Water Management Group and Water Management Partnership	Agriculture and economic development	Community participation in planning, implementation and use of water management infrastructures	Water Management and Operation and Maintenance (O&M) of Infrastructures	Self-assessment by WMGs	Polder Team's Assessment (indicated where it differs)
1	Gojendropur Uttar	2.40	2.36 (78.57%)	2.67 (88.89%)	2.33 (77.78%)	2.17 (70.83%)	High	
2	Taltola Kusarhola	2.33	2.43 (80.95%)	2.08 (69.44%)	2.67 (88.89%)	2.25 (75.00%)	Upper Medium	
3	Ashannagor	2.31	2.50 (83.33%)	1.17 (38.89%)	2.50 (83.33%)	2.38 (79.17%)	Upper Medium	
4	Kanchonnagor	2.30	2.21 (73.81%)	2.58 (86.11%)	2.17 (72.22%)	2.13 (70.83%)	Upper Medium	
5	BCG	2.29	2.36 (78.57%)	1.00 (33.33%)	2.33 (77.78%)	2.38 (79.17%)	Upper Medium	
6	DGKC	2.29	2.43 (80.95%)	1.25 (41.67%)	2.00 (66.67%)	2.13 (70.83%)	Upper Medium	
7	Senpara	2.29	2.36 (78.57%)	1.17 (38.89%)	2.17 (72.22%)	2.25 (75.00%)	Upper Medium	

Sl. No.	Name of WMG	Theme-wise Progress of WMGs on a Scale of 0 to 3 Progress Levels (and in %)					Level of WMG performance	
		Average score (Out of max. score 3)	Establishment of Water Management Group and Water Management Partnership	Agriculture and economic development	Community participation in planning, implementation and use of water management infrastructures	Water Management and Operation and Maintenance (O&M) of Infrastructures	Self-assessment by WMGs	Polder Team's Assessment (indicated where it differs)
8	Chatchatia	2.26	2.29 (76.19%)	1.25 (41.67%)	2.17 (72.22%)	2.13 (70.83%)	Upper Medium	
9	Kagochipara	2.26	2.43 (80.95%)	1.25 (41.67%)	2.00 (66.67%)	2.00 (66.67%)	Upper Medium	
10	Ghona	2.26	2.50 (83.33%)	1.17 (38.89%)	2.00 (66.67%)	2.00 (66.67%)	Upper Medium	
11	Sarafpur Daskhin	2.24	2.00 (66.67%)	1.00 (33.33%)	2.33 (77.78%)	2.75 (91.67%)	Upper Medium	
12	Kukhia	2.24	2.43 (80.95%)	1.00 (33.33%)	2.33 (77.78%)	2.00 (66.67%)	Upper Medium	
13	Moykhali	2.24	2.43 (80.95%)	1.17 (38.89%)	2.00 (66.67%)	2.00 (66.67%)	Upper Medium	
14	Perikhali Chak Sonadanga	2.23	2.43 (80.95%)	2.00 (66.67%)	2.33 (77.78%)	2.13 (70.83%)	Upper Medium	
15	Talikhali	2.21	2.21 (73.81%)	1.00 (33.33%)	2.33 (77.78%)	2.25 (75.00%)	Upper Medium	
16	Kapalidanga	2.20	2.29 (76.19%)	2.50 (83.33%)	2.00 (66.67%)	1.75 (58.33%)	Upper Medium	
17	Sumbonagor	2.18	2.29 (76.19%)	1.17 (38.89%)	2.00 (66.67%)	2.00 (66.67%)	Upper Medium	
18	Naykaty	2.18	2.21 (73.81%)	1.25 (41.67%)	2.17 (72.22%)	1.88 (62.50%)	Upper Medium	
19	Khoribunia	2.18	2.21 (73.81%)	2.33 (77.78%)	2.00 (66.67%)	2.00 (66.67%)	Upper Medium	
20	Jabra	2.18	2.29 (76.19%)	2.17 (72.22%)	2.33 (77.78%)	1.88 (62.50%)	Upper Medium	

Sl. No.	Name of WMG	Theme-wise Progress of WMGs on a Scale of 0 to 3 Progress Levels (and in %)					Level of WMG performance	
		Average score (Out of max. score 3)	Establishment of Water Management Group and Water Management Partnership	Agriculture and economic development	Community participation in planning, implementation and use of water management infrastructures	Water Management and Operation and Maintenance (O&M) of Infrastructures	Self-assessment by WMGs	Polder Team's Assessment (indicated where it differs)
21	Sarafpur Uttar	2.15	2.29 (76.19%)	1.25 (41.67%)	1.67 (55.56%)	2.00 (66.67%)	Upper Medium	
22	Banda	2.15	2.14 (71.43%)	1.17 (38.89%)	2.00 (66.67%)	2.13 (70.83%)	Upper Medium	
23	Ratonkhali	2.15	2.29 (76.19%)	1.00 (33.33%)	2.00 (66.67%)	2.13 (70.83%)	Upper Medium	
24	Dumuria Daskhin	2.15	2.14 (71.43%)	1.17 (38.89%)	2.17 (72.22%)	2.00 (66.67%)	Upper Medium	
25	Dumuria Uttar	2.15	2.21 (73.81%)	1.17 (38.89%)	2.00 (66.67%)	2.00 (66.67%)	Upper Medium	
26	Barowaria	2.12	2.21 (73.81%)	1.00 (33.33%)	2.17 (72.22%)	2.00 (66.67%)	Upper Medium	
27	Jhaltola	2.12	2.29 (76.19%)	1.17 (38.89%)	1.67 (55.56%)	2.00 (66.67%)	Upper Medium	
28	Lohaidanga	2.12	2.21 (73.81%)	0.92 (30.56%)	2.00 (66.67%)	2.25 (75.00%)	Upper Medium	
29	Kharsanda	2.12	2.21 (73.81%)	1.08 (36.11%)	2.00 (66.67%)	2.00 (66.67%)	Upper Medium	
30	Ula Charael	2.12	2.21 (73.81%)	1.08 (36.11%)	2.00 (66.67%)	2.00 (66.67%)	Upper Medium	
31	Goshgati	2.12	2.14 (71.43%)	1.33 (44.44%)	2.00 (66.67%)	1.75 (58.33%)	Upper Medium	
32	kumargata	2.09	2.14 (71.43%)	1.25 (41.67%)	2.00 (66.67%)	1.75 (58.33%)	Medium	
33	Bagdari	2.09	2.21 (73.81%)	1.00 (33.33%)	2.00 (66.67%)	2.00 (66.67%)	Medium	

Sl. No.	Name of WMG	Theme-wise Progress of WMGs on a Scale of 0 to 3 Progress Levels (and in %)					Level of WMG performance	
		Average score (Out of max. score 3)	Establishment of Water Management Group and Water Management Partnership	Agriculture and economic development	Community participation in planning, implementation and use of water management infrastructures	Water Management and Operation and Maintenance (O&M) of Infrastructures	Self-assessment by WMGs	Polder Team's Assessment (indicated where it differs)
34	Rajibpur Dakshin Mahol	2.09	2.21 (73.81%)	1.00 (33.33%)	2.00 (66.67%)	2.00 (66.67%)	Medium	
35	Shahos Joykhali	2.09	2.21 (73.81%)	1.00 (33.33%)	2.00 (66.67%)	2.00 (66.67%)	Medium	
36	Gojendrapur Daskhin	2.06	2.14 (71.43%)	1.33 (44.44%)	2.00 (66.67%)	1.50 (50.00%)	Medium	
37	Uttar Kalikapur	2.06	2.36 (78.57%)	1.00 (33.33%)	1.67 (55.56%)	1.88 (62.50%)	Medium	
38	Daskhin Kalikapur	2.06	2.14 (71.43%)	1.00 (33.33%)	2.00 (66.67%)	2.00 (66.67%)	Medium	
39	Shahos Modhyapara	2.06	2.14 (71.43%)	1.00 (33.33%)	2.00 (66.67%)	2.00 (66.67%)	Medium	
40	Bittl Vulbaria	2.06	2.14 (71.43%)	1.17 (38.89%)	2.00 (66.67%)	1.75 (58.33%)	Medium	
41	Hajibunia	2.05	2.14 (71.43%)	1.92 (63.89%)	2.17 (72.22%)	2.00 (66.67%)	Medium	
42	Keyakhali	2.03	2.21 (73.81%)	1.17 (38.89%)	1.67 (55.56%)	1.75 (58.33%)	Medium	
43	Kodla Motbari	2.03	2.14 (71.43%)	1.50 (50.00%)	1.83 (61.11%)	1.75 (58.33%)	Medium	
44	KDC	2.00	2.14 (71.43%)	1.00 (33.33%)	2.00 (66.67%)	1.75 (58.33%)	Medium	
45	Rajapur	2.00	2.14 (71.43%)	1.00 (33.33%)	2.00 (66.67%)	1.75 (58.33%)	Medium	
46	Tayubpur	2.00	2.14 (71.43%)	0.83 (27.78%)	2.17 (72.22%)	1.88 (62.50%)	Medium	

Sl. No.	Name of WMG	Theme-wise Progress of WMGs on a Scale of 0 to 3 Progress Levels (and in %)					Level of WMG performance	
		Average score (Out of max. score 3)	Establishment of Water Management Group and Water Management Partnership	Agriculture and economic development	Community participation in planning, implementation and use of water management infrastructures	Water Management and Operation and Maintenance (O&M) of Infrastructures	Self-assessment by WMGs	Polder Team's Assessment (indicated where it differs)
47	Sunder Mohal Purba	2.00	2.14 (71.43%)	0.83 (27.78%)	2.00 (66.67%)	2.00 (66.67%)	Medium	
48	Akra Bahir Akra	2.00	2.14 (71.43%)	1.00 (33.33%)	2.00 (66.67%)	1.75 (58.33%)	Medium	
49	Bhulbaria	2.00	2.14 (71.43%)	1.00 (33.33%)	2.00 (66.67%)	1.75 (58.33%)	Medium	
50	Bhander para	1.97	2.07 (69.05%)	0.83 (27.78%)	2.00 (66.67%)	2.00 (66.67%)	Medium	
51	Sunder Mohal Paschim	1.97	2.14 (71.43%)	0.83 (27.78%)	2.00 (66.67%)	1.88 (62.50%)	Medium	
52	Orabunia Rajnagor	1.94	2.00 (66.67%)	0.83 (27.78%)	1.67 (55.56%)	2.25 (75.00%)	Medium	
53	Baniakhali	1.94	2.14 (71.43%)	1.00 (33.33%)	1.67 (55.56%)	1.75 (58.33%)	Medium	
54	DKB	1.91	1.93 (64.29%)	0.83 (27.78%)	2.00 (66.67%)	2.00 (66.67%)	Medium	
55	Ula Dakshin	1.91	2.07 (69.05%)	1.00 (33.33%)	2.00 (66.67%)	1.50 (50.00%)	Medium	

4.3 Polder 30

As per their own assessment, 39 out of 40 WMGs of this polder belong to medium or higher performance groups, 1 WMG is of upper lowperformance category. It is worth mentioning that a number of WMGs- 4 WMGs as per self-assessment of WMGs and 6 WMGs as per Polder Team’s assessment – belong to high performance category. Besides, 23 WMGs belong to upper medium performance category. The upper medium and high performance categories account for 69% of the total number of WMGs. In most cases the Polder Team agrees with the results of self-assessment of WMGs; the few cases where the Polder Team differs in opinion have been noted in the table below.

Sl. No.	Name of WMG	Theme-wise Progress of WMGs on a Scale of 0 to 3 Progress Levels (and in %)					Level of WMG performance	
		Average score (Out of max. score 3)	Establishment of Water Management Group and Water Management Partnership	Agriculture and economic development	Community participation in planning, implementation and use of water management infrastructures	Water Management and Operation and Maintenance (O&M) of Infrastructures	Self-assessment by WMGs	Polder Team’s Assessment (indicated where it differs)
1	Kaemkhola Hula	2.60	2.57 (85.71%)	2.50 (83.33%)	2.67 (88.89%)	2.75 (91.67%)	High	
2	Charkhali Masalia	2.60	2.71 (90.48%)	2.00 (66.67%)	3.00 (100%)	3.00 (100%)	High	
3	Khathamare Gopalkhali	2.60	2.57 (85.71%)	2.83 (94.44%)	2.67 (88.89%)	2.25 (75.00%)	High	
4	Boyarvanga Paschim	2.45	2.43 (80.95%)	2.83 (94.44%)	2.33 (77.78%)	2.00 (66.67%)	High	Upper Medium
5	Boyar Banga Madhya	2.35	2.57 (85.71%)	1.33 (44.44%)	2.00 (66.67%)	2.00 (66.67%)	Upper Medium	
6	Parsolua	2.35	2.43 (80.95%)	1.33 (44.44%)	2.33 (77.78%)	2.00 (66.67%)	Upper Medium	
7	Basurabad	2.35	2.57 (85.71%)	2.50 (83.33%)	2.00 (66.67%)	2.00 (66.67%)	Upper Medium	
8	Ghondhamare Kathaltola	2.35	2.43 (80.95%)	2.50 (83.33%)	2.33 (77.78%)	2.00 (66.67%)	Upper Medium	
9	Kismat Phultola	2.35	2.50 (83.33%)	2.17 (72.22%)	2.67 (88.89%)	2.13 (70.83%)	Upper Medium	High

Sl. No.	Name of WMG	Theme-wise Progress of WMGs on a Scale of 0 to 3 Progress Levels (and in %)					Level of WMG performance	
		Average score (Out of max. score 3)	Establishment of Water Management Group and Water Management Partnership	Agriculture and economic development	Community participation in planning, implementation and use of water management infrastructures	Water Management and Operation and Maintenance (O&M) of Infrastructures	Self-assessment by WMGs	Polder Team's Assessment (indicated where it differs)
10	Perbatiaghata Baruerabad	2.30	2.29 (76.19%)	2.00 (66.67%)	2.33 (77.78%)	2.75 (91.67%)	Upper Medium	
11	Dewayatola	2.30	2.43 (80.95%)	2.00 (66.67%)	2.67 (88.89%)	2.25 (75.00%)	Upper Medium	
12	Mailmara	2.28	2.29 (76.19%)	1.33 (44.44%)	2.67 (88.89%)	2.25 (75.00%)	Upper Medium	
13	Khalsebunia	2.25	2.57 (85.71%)	1.83 (61.11%)	2.33 (77.78%)	2.25 (75.00%)	Upper Medium	High
14	Kashirdanga	2.24	2.43 (80.95%)	1.17 (38.89%)	2.33 (77.78%)	1.75 (58.33%)	Upper Medium	
15	Debitola	2.21	2.43 (80.95%)	1.00 (33.33%)	2.00 (66.67%)	2.13 (70.83%)	Upper Medium	
16	Fultola	2.20	2.43 (80.95%)	2.17 (72.22%)	2.00 (66.67%)	2.00 (66.67%)	Upper Medium	
17	Bathiaghata	2.20	2.43 (80.95%)	2.00 (66.67%)	2.00 (66.67%)	2.25 (75.00%)	Upper Medium	
18	Amtola Kodaldha	2.20	2.36 (78.57%)	2.08 (69.44%)	2.33 (77.78%)	2.00 (66.67%)	Upper Medium	
19	Chak Solemary	2.18	2.57 (85.71%)	2.25 (75.00%)	1.67 (55.56%)	1.75 (58.33%)	Upper Medium	
20	Sukdara Purba	2.18	2.64 (88.10%)	1.67 (55.56%)	2.33 (77.78%)	2.00 (66.67%)	Upper Medium	
21	Titukhali-Pertitukhali	2.17	2.29 (76.19%)	1.50 (50.00%)	1.67 (55.56%)	2.25 (75.00%)	Upper Medium	
22	Baguladanga Pathorighata	2.15	2.29 (76.19%)	2.17 (72.22%)	2.00 (66.67%)	2.00 (66.67%)	Upper Medium	
23	HatbatiDakshin	2.15	2.57 (85.71%)	2.00 (66.67%)	1.67 (55.56%)	2.00 (66.67%)	Upper Medium	

Sl. No.	Name of WMG	Theme-wise Progress of WMGs on a Scale of 0 to 3 Progress Levels (and in %)					Level of WMG performance	
		Average score (Out of max. score 3)	Establishment of Water Management Group and Water Management Partnership	Agriculture and economic development	Community participation in planning, implementation and use of water management infrastructures	Water Management and Operation and Maintenance (O&M) of Infrastructures	Self-assessment by WMGs	Polder Team's Assessment (indicated where it differs)
24	Bolabunia	2.15	2.29 (76.19%)	1.00 (33.33%)	2.00 (66.67%)	2.13 (70.83%)	Upper Medium	
25	Hogolbunia Uttar Madhya	2.12	2.14 (71.43%)	1.00 (33.33%)	2.00 (66.67%)	2.25 (75.00%)	Upper Medium	
26	Barunpara	2.10	2.00 (66.67%)	2.33 (77.78%)	2.00 (66.67%)	2.00 (66.67%)	Upper Medium	Upper Low
27	Hetalunia	2.10	2.57 (85.71%)	2.00 (66.67%)	1.67 (55.56%)	1.75 (58.33%)	Upper Medium	
28	Hatbate Uttar	2.08	2.14 (71.43%)	2.08 (69.44%)	2.00 (66.67%)	2.00 (66.67%)	Medium	
29	Maitvanga Vennabunia	2.05	2.14 (71.43%)	2.00 (66.67%)	2.00 (66.67%)	2.00 (66.67%)	Medium	
30	Katianangla	2.05	2.14 (71.43%)	2.00 (66.67%)	1.67 (55.56%)	2.25 (75.00%)	Medium	
31	Britti Khalshebunia	2.00	2.43 (80.95%)	0.50 (16.67%)	2.00 (66.67%)	2.00 (66.67%)	Medium	High
32	Andaria Khejurtola	2.00	2.14 (71.43%)	1.50 (50.00%)	1.67 (55.56%)	1.75 (58.33%)	Medium	
33	Kaymkhola	1.95	2.14 (71.43%)	2.33 (77.78%)	1.67 (55.56%)	1.25 (41.67%)	Medium	
34	BrittiSolua	1.94	2.29 (76.19%)	1.17 (38.89%)	1.33 (44.44%)	2.00 (66.67%)	Medium	
35	Boyarvanga Purba	1.94	2.14 (71.43%)	1.00 (33.33%)	2.00 (66.67%)	2.00 (66.67%)	Medium	
36	Hogulbunia Dakshin	1.94	2.00 (66.67%)	0.83 (27.78%)	2.00 (66.67%)	2.00 (66.67%)	Medium	
37	Auskhali	1.89	2.29 (76.19%)	1.00 (33.33%)	1.67 (55.56%)	1.75 (58.33%)	Medium	

Sl. No.	Name of WMG	Theme-wise Progress of WMGs on a Scale of 0 to 3 Progress Levels (and in %)					Level of WMG performance	
		Average score (Out of max. score 3)	Establishment of Water Management Group and Water Management Partnership	Agriculture and economic development	Community participation in planning, implementation and use of water management infrastructures	Water Management and Operation and Maintenance (O&M) of Infrastructures	Self-assessment by WMGs	Polder Team's Assessment (indicated where it differs)
38	Gongarampur	1.85	2.29 (76.19%)	1.50 (50.00%)	1.33 (44.44%)	2.00 (66.67%)	Medium	
39	Bajeapti Debitola	1.82	2.14 (71.43%)	1.00 (33.33%)	1.33 (44.44%)	1.50 (50.00%)	Medium	
40	Mosiardanga	1.76	2.00 (66.67%)	0.83 (27.78%)	1.33 (44.44%)	1.75 (58.33%)	Upper Low	

4.4 Polder 43/1A

As per their own assessment, only 5 out of 14 WMGs of this polder belong to medium performance group; the 9 other WMGs belong to upper low or low performance categories. The Polder Team generally agrees with this self-assessment of WMGs, except for categorizing of 5 WMGs whose performance levels are higher as per Polder Team, including 1 belonging to high performance category. One of the reasons of low performance of WMGs appears to be people’s dissatisfaction regarding non-implementation of infrastructures in the polder.

Sl. No.	Name of WMG	Theme-wise Progress of WMGs on a Scale of 0 to 3 Progress Levels (and in %)					Level of WMG performance	
		Average score (Out of max. score 3)	Establishment of Water Management Group and Water Management Partnership	Agriculture and economic development	Community participation in planning, implementation and use of water management infrastructures	Water Management and Operation and Maintenance (O&M) of Infrastructures	Self-assessment by WMGs	Polder Team’s Assessment (indicated where it differs)
1	Purba Sakharia	2.05	2.36 (78.57%)	1.58 (52.78%)	2.00 (66.67%)	1.75 (58.33%)	Medium	High
2	Paschim Atharogachia	1.92	2.14 (71.43%)	1.58 (52.78%)	1.67 (55.56%)	1.75 (58.33%)	Medium	
3	Dakkhin Atharogachia	1.89	2.21 (73.81%)	1.17 (38.89%)	2.17 (72.22%)	1.25 (41.67%)	Medium	
4	Purba Chunakhali	1.87	2.07 (69.05%)	1.67 (55.56%)	1.83 (61.11%)	1.38 (45.83%)	Medium	
5	Pashim Sonakhali	1.81	2.29 (76.19%)	1.00 (33.33%)	1.33 (44.44%)	1.63 (54.17%)	Medium	
6	Chawla	1.75	1.93 (64.29%)	1.00 (33.33%)	1.67 (55.56%)	1.75 (58.33%)	Upper Low	Medium
7	Khakdon	1.68	1.93 (64.29%)	2.08 (69.44%)	1.00 (33.33%)	1.13 (37.50%)	Upper Low	
8	Paschim Kewabunia	1.63	1.93 (64.29%)	1.42 (47.22%)	1.33 (44.44%)	1.25 (41.67%)	Upper Low	
9	Uttar Atharogachia	1.59	1.79 (59.52%)	0.75 (25.00%)	1.67 (55.56%)	1.25 (41.67%)	Upper Low	
10	Paschim Sakharia	1.55	1.93 (64.29%)	1.50 (50.00%)	1.00 (33.33%)	1.38 (45.83%)	Upper Low	

Sl. No.	Name of WMG	Theme-wise Progress of WMGs on a Scale of 0 to 3 Progress Levels (and in %)					Level of WMG performance	
		Average score (Out of max. score 3)	Establishment of Water Management Group and Water Management Partnership	Agriculture and economic development	Community participation in planning, implementation and use of water management infrastructures	Water Management and Operation and Maintenance (O&M) of Infrastructures	Self-assessment by WMGs	Polder Team's Assessment (indicated where it differs)
11	Uttar Sonakhali	1.53	1.93 (64.29%)	0.83 (27.78%)	1.67 (55.56%)	1.00 (33.33%)	Upper Low	
12	Purba Keowabunia	1.42	2.00 (66.67%)	1.67 (55.56%)	0.67 (22.22%)	0.25 (8.33%)	Low	Medium
13	Dakshin Sonakhali	1.32	1.79 (59.52%)	0.67 (22.22%)	1.00 (33.33%)	0.75 (25.00%)	Low	Upper Low
14	Roybala	1.32	1.79 (59.52%)	1.42 (47.22%)	0.67 (22.22%)	0.50 (16.67%)	Low	Medium

4.5 Polder 43/2A

As per their own assessment, 11 out of 22 WMGs of this polder belong to medium performance category; 11 other WMGs belong to upper low or low performance categories. The Polder Team generally agrees with this self-assessment of WMGs, but at least 4 out of 11 WMGs which consider themselves to be belonging to medium performance category are doing better according to the Polder Team; one of them, according to Polder Team, is of high performance category. Despite being one of the old polders, the number of upper low and low performing WMGs is quite high. It is quite evident that all the WMGs of the polder put low scores with respect to agriculture and economic development; thus this is the area where special attention should be given. As for the weakest WMG of the polder, Dakshin Bighai Uttar WMG, the Polder Team is of the opinion that no further input of Blue Gold should be given; it is a non-responsive WMG and has many internal conflicts.

Sl. No.	Name of WMG	Theme-wise Progress of WMGs on a Scale of 0 to 3 Progress Levels (and in %)					Level of WMG performance	
		Average score (Out of max. score 3)	Establishment of Water Management Group and Water Management Partnership	Agriculture and economic development	Community participation in planning, implementation and use of water management infrastructures	Water Management and Operation and Maintenance (O&M) of Infrastructures	Self-assessment by WMGs	Polder Team's Assessment (indicated where it differs)
1	Tuskhali	2.06	2.29 (76.19%)	1.00 (33.33%)	2.00 (66.67%)	1.75 (58.33%)	Medium	Upper Medium
2	Matibanga ChotoBighai	1.88	2.29 (76.19%)	0.33 (11.11%)	2.00 (66.67%)	2.00 (66.67%)	Medium	Upper Medium
3	Paschim Keowabunia	1.88	2.14 (71.43%)	0.67 (22.22%)	2.00 (66.67%)	1.75 (58.33%)	Medium	
4	Paschim Matibanga	1.88	2.29 (76.19%)	0.67 (22.22%)	1.67 (55.56%)	1.75 (58.33%)	Medium	
5	Madhya Matibasnga	1.88	2.14 (71.43%)	0.67 (22.22%)	2.00 (66.67%)	1.75 (58.33%)	Medium	
6	Kumarkhali	1.88	2.14 (71.43%)	0.67 (22.22%)	1.67 (55.56%)	2.00 (66.67%)	Medium	
7	Dakshin Bighai Dakshin	1.82	2.29 (76.19%)	0.67 (22.22%)	1.67 (55.56%)	1.50 (50.00%)	Medium	High
8	Purba Keowabunia	1.82	2.14 (71.43%)	0.67 (22.22%)	1.67 (55.56%)	1.75 (58.33%)	Medium	

Sl. No.	Name of WMG	Theme-wise Progress of WMGs on a Scale of 0 to 3 Progress Levels (and in %)					Level of WMG performance	
		Average score (Out of max. score 3)	Establishment of Water Management Group and Water Management Partnership	Agriculture and economic development	Community participation in planning, implementation and use of water management infrastructures	Water Management and Operation and Maintenance (O&M) of Infrastructures	Self-assessment by WMGs	Polder Team's Assessment (indicated where it differs)
9	Bhazna	1.82	2.14 (71.43%)	1.00 (33.33%)	1.00 (33.33%)	1.75 (58.33%)	Medium	
10	Purba Matibanga	1.82	2.14 (71.43%)	0.67 (22.22%)	1.67 (55.56%)	1.75 (58.33%)	Medium	
11	Patukhali	1.82	2.29 (76.19%)	1.00 (33.33%)	1.00 (33.33%)	1.50 (50.00%)	Medium	Upper Medium
12	Pasharibunia	1.76	2.14 (71.43%)	0.83 (27.78%)	1.33 (44.44%)	1.50 (50.00%)	Upper Low	
13	Paschim Titkata	1.76	2.29 (76.19%)	0.67 (22.22%)	1.33 (44.44%)	1.50 (50.00%)	Upper Low	
14	Purba Bara Bighai	1.76	2.14 (71.43%)	0.67 (22.22%)	1.67 (55.56%)	1.50 (50.00%)	Upper Low	
15	Purba Choto Bighai	1.76	2.14 (71.43%)	0.67 (22.22%)	1.67 (55.56%)	1.50 (50.00%)	Upper Low	
16	Dakshin Titkata	1.71	2.14 (71.43%)	0.67 (22.22%)	1.33 (44.44%)	1.50 (50.00%)	Upper Low	
17	Purba Titkata	1.71	1.86 (61.90%)	1.00 (33.33%)	1.33 (44.44%)	1.50 (50.00%)	Upper Low	
18	Nandipara Madarbunga	1.59	1.86 (61.90%)	1.00 (33.33%)	1.00 (33.33%)	1.25 (41.67%)	Upper Low	
19	Paschim Bara Bighai	1.53	1.86 (61.90%)	0.67 (22.22%)	1.00 (33.33%)	1.00 (33.33%)	Upper Low	
20	Hortakibaria	1.21	1.36 (45.24%)	0.67 (22.22%)	1.00 (33.33%)	1.00 (33.33%)	Low	Upper Low
21	Paschim Choto Bighai	1.06	1.57 (52.38%)	0.00 (0.00%)	1.00 (33.33%)	1.00 (33.33%)	Low	
22	Dakshin Bighai Uttar	0.24	0.43 (14.29%)	0.00 (0.00%)	0.33 (11.11%)	0.00 (0.00%)	Low	

4.6 Polder 43/2B

As per their own assessment, 8 out of 26 WMGs that participated in participatory monitoring exercise – 2 WMGs did not participate in participatory monitoring exercise - belong to medium and upper medium performance categories. However, the Polder Team's assessment differs a bit; while one WMG has rated itself to be of higher performance category than it actually is, sixteen (16) WMGs have rated themselves to be of lower categories (please see the table below) – most striking is that, according to the Polder Team, 3 of those WMGs belong to high performance category. It may be noted that most WMGs of the polder put low scores with respect to agriculture and economic development; thus this is the area where special attention should be given. As for the weakest WMG of the polder, Chinguria Dakshin Balaikati WMG, the Polder Team is of the opinion that no further input of Blue Gold should be given; it is a non-responsive WMG and has many internal conflicts.

Sl. No.	Name of WMG	Theme-wise Progress of WMGs on a Scale of 0 to 3 Progress Levels (and in %)					Level of WMG performance	
		Average score (Out of max. score 3)	Establishment of Water Management Group and Water Management Partnership	Agriculture and economic development	Community participation in planning, implementation and use of water management infrastructures	Water Management and Operation and Maintenance (O&M) of Infrastructures	Self-assessment by WMGs	Polder Team's Assessment (indicated where it differs)
1	Bhangra	2.29	2.43 (80.95%)	1.00 (33.33%)	2.33 (77.78%)	2.25 (75.00%)	Upper Medium	
2	AlorDishari	2.15	2.00 (66.67%)	1.25 (41.67%)	2.17 (72.22%)	2.13 (70.83%)	Upper Medium	
3	Madhya Amkhola	2.00	2.29 (76.19%)	0.83 (27.78%)	1.67 (55.56%)	2.00 (66.67%)	Medium	
4	Dari Baherchar	1.94	2.29 (76.19%)	0.83 (27.78%)	1.67 (55.56%)	1.75 (58.33%)	Medium	High
5	Dakshin Amkhola	1.94	1.93 (64.29%)	0.58 (19.44%)	2.00 (66.67%)	2.00 (66.67%)	Medium	High
6	Mushurikathi	1.94	2.29 (76.19%)	0.33 (11.11%)	2.00 (66.67%)	1.75 (58.33%)	Medium	
7	Algi Tafalbaria	1.91	2.00 (66.67%)	0.67 (22.22%)	2.17 (72.22%)	1.50 (50.00%)	Medium	
8	Suhari Mini polder	1.88	1.86 (61.90%)	0.67 (22.22%)	2.00 (66.67%)	1.75 (58.33%)	Medium	Upper Low

Sl. No.	Name of WMG	Theme-wise Progress of WMGs on a Scale of 0 to 3 Progress Levels (and in %)					Level of WMG performance	
		Average score (Out of max. score 3)	Establishment of Water Management Group and Water Management Partnership	Agriculture and economic development	Community participation in planning, implementation and use of water management infrastructures	Water Management and Operation and Maintenance (O&M) of Infrastructures	Self-assessment by WMGs	Polder Team's Assessment (indicated where it differs)
9	Kalaikishore	1.79	1.93 (64.29%)	1.00 (33.33%)	1.50 (50.00%)	1.63 (54.17%)	Upper Low	Medium
10	Uttar Badura	1.79	1.71 (57.14%)	1.50 (50.00%)	2.00 (66.67%)	1.75 (58.33%)	Upper Low	Medium
11	Purba Badura	1.78	1.93 (64.29%)	1.67 (55.56%)	1.50 (50.00%)	1.88 (62.50%)	Upper Low	Medium
12	Dakshin-purba Golbashbunia	1.78	1.86 (61.90%)	2.00 (66.67%)	1.33 (44.44%)	1.63 (54.17%)	Upper Low	Medium
13	Uttar Chhailabunia	1.78	1.93 (64.29%)	2.00 (66.67%)	1.17 (38.89%)	1.63 (54.17%)	Upper Low	
14	Nijsuhari Dakshin Chhailabunia	1.75	1.71 (57.14%)	0.50 (16.67%)	2.00 (66.67%)	1.75 (58.33%)	Upper Low	Medium
15	Purba Sonakhali	1.75	2.14 (71.43%)	1.17 (38.89%)	1.33 (44.44%)	1.38 (45.83%)	Upper Low	Medium
16	Uttar-paschim Golbanshbunia	1.74	1.71 (57.14%)	1.50 (50.00%)	1.33 (44.44%)	2.00 (66.67%)	Upper Low	Medium
17	Kanchanbaria Khantakhali	1.71	1.93 (64.29%)	0.67 (22.22%)	2.33 (77.78%)	1.13 (37.50%)	Upper Low	Medium
18	Gol Bauria	1.68	1.86 (61.90%)	0.92 (30.56%)	1.33 (44.44%)	1.50 (50.00%)	Upper Low	Medium
19	Uttar Amkhola	1.66	1.71 (57.14%)	0.58 (19.44%)	1.67 (55.56%)	1.50 (50.00%)	Upper Low	Medium
20	Garabunia	1.61	1.71 (57.14%)	0.83 (27.78%)	1.67 (55.56%)	2.00 (66.67%)	Upper Low	Medium
21	Ramananda	1.59	1.43 (47.62%)	1.00 (33.33%)	1.33 (44.44%)	1.75 (58.33%)	Upper Low	

Sl. No.	Name of WMG	Theme-wise Progress of WMGs on a Scale of 0 to 3 Progress Levels (and in %)					Level of WMG performance	
		Average score (Out of max. score 3)	Establishment of Water Management Group and Water Management Partnership	Agriculture and economic development	Community participation in planning, implementation and use of water management infrastructures	Water Management and Operation and Maintenance (O&M) of Infrastructures	Self-assessment by WMGs	Polder Team's Assessment (indicated where it differs)
22	Algi Chhailtabunia	1.56	1.57 (52.38%)	0.83 (27.78%)	1.33 (44.44%)	2.00 (66.67%)	Upper Low	High
23	Dakshin-Paschim Badura	1.55	1.71 (57.14%)	1.67 (55.56%)	1.50 (50.00%)	1.13 (37.50%)	Upper Low	
24	Ramdula	1.50	1.79 (59.52%)	1.00 (33.33%)	1.17 (38.89%)	1.25 (41.67%)	Upper Low	
25	Dakshin-PurbaBadura	1.38	1.71 (57.14%)	1.33 (44.44%)	1.17 (38.89%)	1.00 (33.33%)	Low	Medium
26	Chingaria Dakshin Balaikati	1.19	1.29 (42.86%)	0.75 (25.00%)	1.33 (44.44%)	1.00 (33.33%)	Low	Upper Low
27	Maddhya Chailabunia	No information						Upper Low
28	Balaikathi	No information						Low

4.7 Polder 43/2D

As per their own assessment, out of 28 WMGs of the polder 7 WMGs belong to upper medium performance category and 17 WMGs belong to medium performance category; thus, the progress of the WMGs is reasonably good. However, the Polder Team differs about the rating of 10 WMGs; according to the Polder Team, 7 of them belong to higher performance categories than their own rating, while performance levels of 3 WMGs are lower. (see below).

Sl. No.	Name of WMG	Theme-wise Progress of WMGs on a Scale of 0 to 3 Progress Levels (and in %)					Level of WMG performance	
		Average score (Out of max. score 3)	Establishment of Water Management Group and Water Management Partnership	Agriculture and economic development	Community participation in planning, implementation and use of water management infrastructures	Water Management and Operation and Maintenance (O&M) of Infrastructures	Self-assessment by WMGs	Polder Team's Assessment (indicated where it differs)
1	Chotto Auliapur Uttar	2.21	2.50 (83.33%)	1.67 (55.56%)	2.33 (77.78%)	1.88 (62.50%)	Upper Medium	
2	Thangai	2.13	2.29 (76.19%)	0.67 (22.22%)	2.00 (66.67%)	2.00 (66.67%)	Upper Medium	Upper Low
3	Purba Marichbunia	2.13	2.29 (76.19%)	2.17 (72.22%)	2.00 (66.67%)	1.88 (62.50%)	Upper Medium	
4	Pakshia	2.12	2.14 (71.43%)	1.08 (36.11%)	2.00 (66.67%)	2.13 (70.83%)	Upper Medium	
5	Charabunia	2.12	2.36 (78.57%)	1.08 (36.11%)	1.67 (55.56%)	2.00 (66.67%)	Upper Medium	
6	Keshabpur	2.11	2.29 (76.19%)	1.75 (58.33%)	2.00 (66.67%)	1.88 (62.50%)	Upper Medium	Medium
7	Uttar Bazarghona	2.10	2.21 (73.81%)	2.08 (69.44%)	2.00 (66.67%)	2.00 (66.67%)	Upper Medium	High
8	Paschim Pachakoralia	2.08	2.21 (73.81%)	2.00 (66.67%)	1.67 (55.56%)	1.75 (58.33%)	Medium	
9	Tafalbaria	2.03	2.21 (73.81%)	1.50 (50.00%)	2.00 (66.67%)	2.00 (66.67%)	Medium	
10	Purba Panchakoralia	2.03	2.14 (71.43%)	1.75 (58.33%)	1.83 (61.11%)	1.88 (62.50%)	Medium	

Sl. No.	Name of WMG	Theme-wise Progress of WMGs on a Scale of 0 to 3 Progress Levels (and in %)					Level of WMG performance	
		Average score (Out of max. score 3)	Establishment of Water Management Group and Water Management Partnership	Agriculture and economic development	Community participation in planning, implementation and use of water management infrastructures	Water Management and Operation and Maintenance (O&M) of Infrastructures	Self-assessment by WMGs	Polder Team's Assessment (indicated where it differs)
11	Chotto Auliapur Dakshin	2.03	2.14 (71.43%)	1.75 (58.33%)	1.67 (55.56%)	2.00 (66.67%)	Medium	Upper Medium
12	Dabuapur	2.00	2.29 (76.19%)	0.67 (22.22%)	1.50 (50.00%)	2.00 (66.67%)	Medium	
13	Paschim Sarikkhali	1.97	2.07 (69.05%)	1.67 (55.56%)	2.00 (66.67%)	1.75 (58.33%)	Medium	
14	Bara Auliapur Uttar	1.97	2.07 (69.05%)	1.67 (55.56%)	2.00 (66.67%)	1.75 (58.33%)	Medium	
15	Abad Hajikhali	1.97	2.14 (71.43%)	1.50 (50.00%)	2.00 (66.67%)	1.88 (62.50%)	Medium	
16	Uttar Bohalgachhia	1.97	2.29 (76.19%)	1.00 (33.33%)	1.83 (61.11%)	1.50 (50.00%)	Medium	
17	Barunbaria	1.97	2.14 (71.43%)	1.00 (33.33%)	1.50 (50.00%)	2.00 (66.67%)	Medium	
18	Sankarpur	1.97	2.07 (69.05%)	0.67 (22.22%)	1.83 (61.11%)	1.88 (62.50%)	Medium	
19	Purba Gerakhali Uttar	1.93	2.07 (69.05%)	1.83 (61.11%)	1.83 (61.11%)	1.88 (62.50%)	Medium	
20	Patukhali	1.92	2.00 (66.67%)	1.50 (50.00%)	1.83 (61.11%)	2.00 (66.67%)	Medium	Upper Medium
21	Dakshin Marichbunia	1.88	2.07 (69.05%)	1.92 (63.89%)	1.67 (55.56%)	1.63 (54.17%)	Medium	
22	Chamta	1.87	1.93 (64.29%)	1.67 (55.56%)	1.50 (50.00%)	1.88 (62.50%)	Medium	
23	Bara Auliapur Purba	1.87	2.07 (69.05%)	1.58 (52.78%)	1.67 (55.56%)	1.63 (54.17%)	Medium	

Sl. No.	Name of WMG	Theme-wise Progress of WMGs on a Scale of 0 to 3 Progress Levels (and in %)					Level of WMG performance	
		Average score (Out of max. score 3)	Establishment of Water Management Group and Water Management Partnership	Agriculture and economic development	Community participation in planning, implementation and use of water management infrastructures	Water Management and Operation and Maintenance (O&M) of Infrastructures	Self-assessment by WMGs	Polder Team's Assessment (indicated where it differs)
24	Ballabhpur	1.84	1.93 (64.29%)	0.67 (22.22%)	1.50 (50.00%)	1.88 (62.50%)	Medium	Upper Low
25	Purba Auliapur	1.76	2.14 (71.43%)	0.67 (22.22%)	1.00 (33.33%)	2.00 (66.67%)	Upper Low	Medium
26	Dakshin Hajikali	1.71	1.86 (61.90%)	0.83 (27.78%)	1.33 (44.44%)	1.75 (58.33%)	Upper Low	Medium
27	Dakshin Bazarghona	1.68	1.86 (61.90%)	1.42 (47.22%)	1.50 (50.00%)	1.50 (50.00%)	Upper Low	Medium
28	Purba Gerakhali	1.63	1.71 (57.14%)	1.58 (52.78%)	1.33 (44.44%)	1.75 (58.33%)	Upper Low	Medium

4.8 Polder 43/2E

As per their own assessment, all the WMGs of the polder belong to medium performance category. The Polder Team, however, differs about rating of 6 WMGs, one of which is high performance category WMG and 3 others are of upper medium performance category. Thus, the overall progress of WMGs of this polder is reasonably good; yet it may be noted that most WMGs of the polder put low scores with respect to agriculture and economic development; this is the area where special attention should be given. According to the Polder Team, however, PurbaJainkatiPurba is the weakest of all WMGs of the polder, which is of upper low performance category; in order to improve its performance, the first and foremost requirement is to reshuffle the Executive Committee through election.

Sl. No.	Name of WMG	Theme-wise Progress of WMGs on a Scale of 0 to 3 Progress Levels (and in %)					Level of WMG performance	
		Average score (Out of max. score 3)	Establishment of Water Management Group and Water Management Partnership	Agriculture and economic development	Community participation in planning, implementation and use of water management infrastructures	Water Management and Operation and Maintenance (O&M) of Infrastructures	Self-assessment by WMGs	Polder Team's Assessment (indicated where it differs)
1	Purba Jainkati Paschim	2.00	2.29 (76.19%)	1.83 (61.11%)	2.00 (66.67%)	1.75 (58.33%)	Medium	Upper Medium
2	Fedainagar	2.00	2.14 (71.43%)	1.33 (44.44%)	2.00 (66.67%)	1.75 (58.33%)	Medium	
3	Katura Taluk	2.00	2.14 (71.43%)	1.00 (33.33%)	2.00 (66.67%)	1.75 (58.33%)	Medium	Upper Medium
4	Dakshin Sehakati Uttar	2.00	2.14 (71.43%)	1.50 (50.00%)	2.00 (66.67%)	2.00 (66.67%)	Medium	Upper Medium
5	Pirtola	2.00	2.14 (71.43%)	0.67 (22.22%)	2.00 (66.67%)	1.75 (58.33%)	Medium	
6	Talbaria	2.00	2.14 (71.43%)	1.00 (33.33%)	2.00 (66.67%)	1.75 (58.33%)	Medium	
7	Purba Jainkati Madhya	2.00	2.14 (71.43%)	0.67 (22.22%)	2.00 (66.67%)	1.75 (58.33%)	Medium	
8	Char Jainkati Paschim	1.94	2.29 (76.19%)	0.67 (22.22%)	2.00 (66.67%)	1.75 (58.33%)	Medium	
9	Purba Jainkati Purba	1.94	2.00 (66.67%)	1.00 (33.33%)	2.00 (66.67%)	1.75 (58.33%)	Medium	Upper Low

Sl. No.	Name of WMG	Theme-wise Progress of WMGs on a Scale of 0 to 3 Progress Levels (and in %)					Level of WMG performance	
		Average score (Out of max. score 3)	Establishment of Water Management Group and Water Management Partnership	Agriculture and economic development	Community participation in planning, implementation and use of water management infrastructures	Water Management and Operation and Maintenance (O&M) of Infrastructures	Self-assessment by WMGs	Polder Team's Assessment (indicated where it differs)
10	Uttar Sehakati	1.94	2.00 (66.67%)	0.67 (22.22%)	2.00 (66.67%)	1.75 (58.33%)	Medium	Upper Low
11	Char Jainkati Purba	1.94	2.00 (66.67%)	0.67 (22.22%)	2.00 (66.67%)	1.75 (58.33%)	Medium	
12	Dakshin Sehakati Dakshin	1.85	2.43 (80.95%)	1.50 (50.00%)	2.00 (66.67%)	1.25 (41.67%)	Medium	High

4.9 Polder 43/2F

As per their own assessment, 9 out of 27 WMGs of the polder belong to medium performance category; the rest of the WMGs belong to upper low or low performance categories. The Polder Team differs about rating of 13 WMGs, which, the Team thinks, belong to higher performance categories than what WMGs have rated, including 3 WMGs belonging to high performance category. Being an old polder, one would expect that a greater number of WMGs belonged to higher performance categories. It may be noted that many WMGs of the polder put low scores with respect to agriculture and economic development; thus this is the area where special attention should be given.

Sl. No.	Name of WMG	Theme-wise Progress of WMGs on a Scale of 0 to 3 Progress Levels (and in %)					Level of WMG performance	
		Average score (Out of max. score 3)	Establishment of Water Management Group and Water Management Partnership	Agriculture and economic development	Community participation in planning, implementation and use of water management infrastructures	Water Management and Operation and Maintenance (O&M) of Infrastructures	Self-assessment by WMGs	Polder Team's Assessment (indicated where it differs)
1	Uttar Gozkhali	1.95	2.00 (66.67%)	2.08 (69.44%)	1.83 (61.11%)	1.75 (58.33%)	Medium	
2	Uttar Angulkata	1.95	2.14 (71.43%)	1.67 (55.56%)	1.83 (61.11%)	1.63 (54.17%)	Medium	High
3	Uttar Dalacara Uttar	1.94	2.14 (71.43%)	0.83 (27.78%)	2.00 (66.67%)	1.75 (58.33%)	Medium	
4	Dakshin-Purba Kalibari	1.92	2.07 (69.05%)	1.58 (52.78%)	2.00 (66.67%)	1.63 (54.17%)	Medium	High
5	Daksin Horidrabaria	1.92	2.07 (69.05%)	1.17 (38.89%)	2.00 (66.67%)	1.75 (58.33%)	Medium	
6	Purba Gulishakhali	1.88	2.14 (71.43%)	1.00 (33.33%)	1.50 (50.00%)	1.63 (54.17%)	Medium	
7	Uttar Dalacara	1.88	2.00 (66.67%)	2.00 (66.67%)	1.83 (61.11%)	1.50 (50.00%)	Medium	
8	Daksin Angulkata	1.84	2.14 (71.43%)	1.25 (41.67%)	1.83 (61.11%)	1.75 (58.33%)	Medium	Upper Medium
9	Uttar Kalibari Bazarghona	1.80	1.86 (61.90%)	1.92 (63.89%)	1.67 (55.56%)	1.63 (54.17%)	Medium	
10	Uattar Kekuani	1.73	2.07 (69.05%)	1.67 (55.56%)	1.50 (50.00%)	1.38 (45.83%)	Upper Low	High

Sl. No.	Name of WMG	Theme-wise Progress of WMGs on a Scale of 0 to 3 Progress Levels (and in %)					Level of WMG performance	
		Average score (Out of max. score 3)	Establishment of Water Management Group and Water Management Partnership	Agriculture and economic development	Community participation in planning, implementation and use of water management infrastructures	Water Management and Operation and Maintenance (O&M) of Infrastructures	Self-assessment by WMGs	Polder Team's Assessment (indicated where it differs)
11	Debpur	1.72	1.93 (64.29%)	0.67 (22.22%)	2.00 (66.67%)	1.88 (62.50%)	Upper Low	Medium
12	Bainbunia	1.72	2.00 (66.67%)	0.83 (27.78%)	1.83 (61.11%)	1.63 (54.17%)	Upper Low	Medium
13	Fakirkhali Gojkhali	1.71	1.93 (64.29%)	1.00 (33.33%)	2.00 (66.67%)	1.75 (58.33%)	Upper Low	
14	Dakshin Dalachara	1.70	1.79 (59.52%)	1.42 (47.22%)	2.00 (66.67%)	1.75 (58.33%)	Upper Low	Upper Medium
15	Dakshin Gojkhali	1.69	2.00 (66.67%)	0.67 (22.22%)	1.83 (61.11%)	1.75 (58.33%)	Upper Low	
16	Uttar Purba Kalagacia	1.68	2.00 (66.67%)	1.67 (55.56%)	1.33 (44.44%)	(33.33%)	Upper Low	
17	Madhya Dalacara	1.68	1.93 (64.29%)	1.17 (38.89%)	1.50 (50.00%)	1.75 (58.33%)	Upper Low	
18	Uttar Gulishakhali	1.68	1.93 (64.29%)	0.75 (25.00%)	1.33 (44.44%)	1.63 (54.17%)	Upper Low	
19	Dakshin Paschim Kalibari	1.61	1.93 (64.29%)	1.08 (36.11%)	1.50 (50.00%)	1.50 (50.00%)	Upper Low	
20	Uttar Horidrbaria	1.53	1.71 (57.14%)	0.92 (30.56%)	1.17 (38.89%)	1.63 (54.17%)	Upper Low	
21	Paschim Kalagacia Paschim	1.53	1.79 (59.52%)	0.67 (22.22%)	1.50 (50.00%)	1.63 (54.17%)	Upper Low	Medium
22	Daksin Kekuani	1.44	1.57 (52.38%)	0.83 (27.78%)	1.33 (44.44%)	1.50 (50.00%)	Low	Upper Low
23	Paschim Kalagachia	1.42	1.57 (52.38%)	0.92 (30.56%)	1.50 (50.00%)	1.13 (37.50%)	Low	Upper Low
24	Madhya Gulishakhali	1.38	1.50 (50.00%)	0.67 (22.22%)	1.33 (44.44%)	1.25 (41.67%)	Low	Upper Low

Sl. No.	Name of WMG	Theme-wise Progress of WMGs on a Scale of 0 to 3 Progress Levels (and in %)					Level of WMG performance	
		Average score (Out of max. score 3)	Establishment of Water Management Group and Water Management Partnership	Agriculture and economic development	Community participation in planning, implementation and use of water management infrastructures	Water Management and Operation and Maintenance (O&M) of Infrastructures	Self-assessment by WMGs	Polder Team's Assessment (indicated where it differs)
25	Daksin Gulishakhali	1.36	1.50 (50.00%)	1.00 (33.33%)	1.33 (44.44%)	1.00 (33.33%)	Low	Upper Low
26	Madhya Kalagachia	1.24	1.29 (42.86%)	0.67 (22.22%)	1.33 (44.44%)	1.00 (33.33%)	Low	Upper Low
27	Bazarkhali	0.78	0.93 (30.95%)	0.50 (16.67%)	0.67 (22.22%)	0.63 (20.83%)	Low	

4.10 Polder 2

As per their own assessment, 31 out of 58 WMGs of the polder belong to medium or upper medium performance category; the rest of the WMGs belong to upper low or low performance categories. The Polder Team is of the opinion that, except for a few cases, the scores that the WMGs of this polder have given are correct. Being one of the new polders, the progress of WMGs may be considered reasonably good. It may be noted, however, that many WMGs of the polder put low scores with respect to agriculture and economic development; thus this is the area where special attention should be given.

Sl. No.	Name of WMG	Theme-wise Progress of WMGs on a Scale of 0 to 3 Progress Levels (and in %)					Level of WMG performance	
		Average score (Out of max. score 3)	Establishment of Water Management Group and Water Management Partnership	Agriculture and economic development	Community participation in planning, implementation and use of water management infrastructures	Water Management and Operation and Maintenance (O&M) of Infrastructures	Self-assessment by WMGs	Polder Team's Assessment (indicated where it differs)
1	Nobadkhali khal	2.29	2.86 (95.24%)	1.00 (33.33%)	2.00 (66.67%)	1.75 (58.33%)	Upper Medium	
2	Amodkhali khal	2.18	2.29 (76.19%)	1.00 (33.33%)	1.33 (44.44%)	2.75 (91.67%)	Upper Medium	Medium
3	Berbari Tamaltala	2.06	2.29 (76.19%)	0.83 (27.78%)	1.67 (55.56%)	2.25 (75.00%)	Medium	
4	Budhata Dakshin Bakribiler khal	2.06	2.43 (80.95%)	1.33 (44.44%)	1.33 (44.44%)	1.50 (50.00%)	Medium	
5	Fatikerbiler khal	2.03	2.14 (71.43%)	1.08 (36.11%)	2.00 (66.67%)	1.75 (58.33%)	Medium	
6	Beula Nayeber Khal	2.00	2.29 (76.19%)	1.00 (33.33%)	1.67 (55.56%)	1.75 (58.33%)	Medium	
7	Damarpota khal	2.00	2.29 (76.19%)	1.00 (33.33%)	1.67 (55.56%)	1.75 (58.33%)	Medium	
8	Purba Buramara khal	2.00	2.14 (71.43%)	1.17 (38.89%)	1.67 (55.56%)	1.75 (58.33%)	Medium	
9	Dakshin Buramara khal	2.00	2.14 (71.43%)	1.00 (33.33%)	1.67 (55.56%)	2.00 (66.67%)	Medium	

Sl. No.	Name of WMG	Theme-wise Progress of WMGs on a Scale of 0 to 3 Progress Levels (and in %)					Level of WMG performance	
		Average score (Out of max. score 3)	Establishment of Water Management Group and Water Management Partnership	Agriculture and economic development	Community participation in planning, implementation and use of water management infrastructures	Water Management and Operation and Maintenance (O&M) of Infrastructures	Self-assessment by WMGs	Polder Team's Assessment (indicated where it differs)
10	Adharmani khal	2.00	2.29 (76.19%)	1.00 (33.33%)	1.67 (55.56%)	1.75 (58.33%)	Medium	
11	Baluigasa Dhulihor	2.00	2.29 (76.19%)	1.33 (44.44%)	1.33 (44.44%)	1.50 (50.00%)	Medium	
12	Pallerchand khal	2.00	2.00 (66.67%)	1.33 (44.44%)	1.67 (55.56%)	1.75 (58.33%)	Medium	
13	Shallye Paschimpara & Beradangi	1.94	2.14 (71.43%)	0.83 (27.78%)	2.33 (77.78%)	1.50 (50.00%)	Medium	
14	Budhata Paschimpara	1.94	2.43 (80.95%)	1.33 (44.44%)	1.33 (44.44%)	1.00 (33.33%)	Medium	
15	Kulla Amodkhali khal	1.94	1.71 (57.14%)	1.50 (50.00%)	1.33 (44.44%)	2.00 (66.67%)	Medium	Upper Medium
16	Dakkin Chapra khal	1.94	2.29 (76.19%)	1.00 (33.33%)	1.67 (55.56%)	1.50 (50.00%)	Medium	
17	Moricchap	1.94	2.29 (76.19%)	0.83 (27.78%)	1.67 (55.56%)	1.75 (58.33%)	Medium	
18	Naikati Bottala khal	1.94	2.00 (66.67%)	1.00 (33.33%)	2.00 (66.67%)	1.75 (58.33%)	Medium	
19	Bardal Paschimpara	1.88	2.00 (66.67%)	1.33 (44.44%)	1.33 (44.44%)	1.50 (50.00%)	Medium	
20	Joribiler khal	1.88	2.14 (71.43%)	0.67 (22.22%)	1.67 (55.56%)	2.00 (66.67%)	Medium	
21	Ghoskhali khal	1.88	2.43 (80.95%)	0.67 (22.22%)	1.33 (44.44%)	1.75 (58.33%)	Medium	
22	Purba Amodkhali khal	1.88	1.86 (61.90%)	1.00 (33.33%)	2.00 (66.67%)	1.75 (58.33%)	Medium	

Sl. No.	Name of WMG	Theme-wise Progress of WMGs on a Scale of 0 to 3 Progress Levels (and in %)					Level of WMG performance	
		Average score (Out of max. score 3)	Establishment of Water Management Group and Water Management Partnership	Agriculture and economic development	Community participation in planning, implementation and use of water management infrastructures	Water Management and Operation and Maintenance (O&M) of Infrastructures	Self-assessment by WMGs	Polder Team's Assessment (indicated where it differs)
23	Surjakhali-2 khal	1.82	2.14 (71.43%)	0.83 (27.78%)	1.67 (55.56%)	1.50 (50.00%)	Medium	
24	Dhulihor Nathpara	1.82	2.14 (71.43%)	1.00 (33.33%)	1.67 (55.56%)	1.25 (41.67%)	Medium	
25	Purba Machkhola Purbapara	1.82	2.14 (71.43%)	1.17 (38.89%)	1.67 (55.56%)	1.00 (33.33%)	Medium	
26	Guddirbiler khal	1.82	2.00 (66.67%)	1.00 (33.33%)	1.33 (44.44%)	1.75 (58.33%)	Medium	
27	Darar khal	1.82	1.86 (61.90%)	1.17 (38.89%)	1.67 (55.56%)	1.50 (50.00%)	Medium	
28	Kochourbiler khal	1.82	2.00 (66.67%)	1.00 (33.33%)	1.67 (55.56%)	1.50 (50.00%)	Medium	
29	Himkhali khal	1.82	2.14 (71.43%)	0.83 (27.78%)	1.33 (44.44%)	1.75 (58.33%)	Medium	
30	Nowapara khal	1.82	2.14 (71.43%)	1.17 (38.89%)	1.67 (55.56%)	1.00 (33.33%)	Medium	
31	Dhegurbiler khal	1.82	2.00 (66.67%)	1.00 (33.33%)	1.67 (55.56%)	1.50 (50.00%)	Medium	
32	Purba Machkhola Paschimpara	1.76	2.00 (66.67%)	0.83 (27.78%)	1.67 (55.56%)	1.50 (50.00%)	Upper Low	
33	Surjakhali khal-1	1.76	2.14 (71.43%)	0.50 (16.67%)	1.67 (55.56%)	1.75 (58.33%)	Upper Low	
34	Purba Kochurbiler khal	1.76	2.14 (71.43%)	1.17 (38.89%)	1.00 (33.33%)	1.25 (41.67%)	Upper Low	
35	Jordia Eru khal	1.76	2.14 (71.43%)	0.83 (27.78%)	1.33 (44.44%)	1.50 (50.00%)	Upper Low	

Sl. No.	Name of WMG	Theme-wise Progress of WMGs on a Scale of 0 to 3 Progress Levels (and in %)					Level of WMG performance	
		Average score (Out of max. score 3)	Establishment of Water Management Group and Water Management Partnership	Agriculture and economic development	Community participation in planning, implementation and use of water management infrastructures	Water Management and Operation and Maintenance (O&M) of Infrastructures	Self-assessment by WMGs	Polder Team's Assessment (indicated where it differs)
36	Koikhali khal	1.76	2.00 (66.67%)	1.17 (38.89%)	1.33 (44.44%)	1.25 (41.67%)	Upper Low	
37	Hazikhali khal	1.71	2.00 (66.67%)	0.83 (27.78%)	1.33 (44.44%)	1.50 (50.00%)	Upper Low	
38	Darrikkha khal	1.71	1.71 (57.14%)	1.17 (38.89%)	1.33 (44.44%)	1.50 (50.00%)	Upper Low	
39	Pacshim Celerbiler khal	1.71	2.00 (66.67%)	1.17 (38.89%)	0.33 (11.11%)	1.75 (58.33%)	Upper Low	
40	Shoilhari Khal	1.71	1.86 (61.90%)	1.00 (33.33%)	1.33 (44.44%)	1.50 (50.00%)	Upper Low	
41	Gobindapur Uttarpara	1.65	2.00 (66.67%)	0.83 (27.78%)	1.33 (44.44%)	1.25 (41.67%)	Upper Low	
42	Jiala Bhadondanga	1.65	1.86 (61.90%)	1.00 (33.33%)	1.33 (44.44%)	1.25 (41.67%)	Upper Low	
43	Paschim Machkhola Purbapara	1.65	1.71 (57.14%)	0.83 (27.78%)	2.00 (66.67%)	1.25 (41.67%)	Upper Low	
44	Uttar Pallerchand khal	1.65	2.00 (66.67%)	1.00 (33.33%)	1.67 (55.56%)	0.75 (25.00%)	Upper Low	
45	Jhiyar khal	1.65	1.86 (61.90%)	1.00 (33.33%)	1.00 (33.33%)	1.50 (50.00%)	Upper Low	
46	Shimulbaria khal	1.65	1.86 (61.90%)	1.00 (33.33%)	1.00 (33.33%)	1.50 (50.00%)	Upper Low	
47	Shallye Purbopara	1.59	1.71 (57.14%)	0.83 (27.78%)	1.33 (44.44%)	1.50 (50.00%)	Upper Low	
48	Bardal Bagdangi	1.59	1.86 (61.90%)	1.17 (38.89%)	1.33 (44.44%)	0.75 (25.00%)	Upper Low	

Sl. No.	Name of WMG	Theme-wise Progress of WMGs on a Scale of 0 to 3 Progress Levels (and in %)					Level of WMG performance	
		Average score (Out of max. score 3)	Establishment of Water Management Group and Water Management Partnership	Agriculture and economic development	Community participation in planning, implementation and use of water management infrastructures	Water Management and Operation and Maintenance (O&M) of Infrastructures	Self-assessment by WMGs	Polder Team's Assessment (indicated where it differs)
49	Paschim Machkhola Paschimpara	1.59	1.57 (52.38%)	0.83 (27.78%)	1.67 (55.56%)	1.50 (50.00%)	Upper Low	
50	Delkhola khal	1.53	1.57 (52.38%)	1.33 (44.44%)	1.33 (44.44%)	0.75 (25.00%)	Upper Low	
51	Lambadanga Zamirer khal	1.53	1.57 (52.38%)	1.00 (33.33%)	1.00 (33.33%)	1.50 (50.00%)	Upper Low	
52	Suparighata Sanapara	1.53	1.43 (47.62%)	1.00 (33.33%)	1.33 (44.44%)	1.50 (50.00%)	Upper Low	
53	Umarkhali khal	1.47	1.86 (61.90%)	0.33 (11.11%)	1.67 (55.56%)	1.25 (41.67%)	Low	
54	Buramara khal	1.41	1.57 (52.38%)	1.00 (33.33%)	1.33 (44.44%)	0.75 (25.00%)	Low	
55	Sanapara	1.41	1.29 (42.86%)	1.00 (33.33%)	1.33 (44.44%)	1.25 (41.67%)	Low	
56	Chelarbiler khal	1.35	1.86 (61.90%)	1.00 (33.33%)	0.67 (22.22%)	0.50 (16.67%)	Low	
57	Madahy Adhermanik khal	0.88	1.00 (33.33%)	1.00 (33.33%)	0.33 (11.11%)	0.25 (8.33%)	Low	
58	Shishar khal	0.82	1.14 (38.10%)	(16.67%)	0.33 (11.11%)	0.50 (16.67%)	Low	

4.11 Polder 26

As per their own assessment, 14 out of 15 WMGs of the polder belong to medium or upper medium performance category. According to Polder Team, the scoring has been done well by the WMGs. It being one of the new polders, the progress of the WMGs is reasonably good. It may be noted, however, that all the WMGs of the polder have put low scores with respect to agriculture and economic development; thus this is the area where special attention should be given..

Sl. No.	Name of WMG	Average score (Out of max. score 3)	Theme-wise Progress of WMGs on a Scale of 0 to 3 Progress Levels (and in %)				Level of WMG performance	
			Establishment of Water Management Group and Water Management Partnership	Agriculture and economic development	Community participation in planning, implementation and use of water management infrastructures	Water Management and Operation and Maintenance (O&M) of Infrastructures	Self-assessment by WMGs	Polder Team's Assessment (indicated where it differs)
1	Patibunia	2.15	2.29 (76.19%)	1.00 (33.33%)	2.17 (72.22%)	2.00 (66.67%)	Upper Medium	
2	Jialtola	2.12	2.29 (76.19%)	1.00 (33.33%)	2.00 (66.67%)	2.00 (66.67%)	Upper Medium	
3	Sibpur Badurgacha	2.12	2.29 (76.19%)	1.00 (33.33%)	2.00 (66.67%)	2.00 (66.67%)	Upper Medium	
4	Paschim Sovna (uttar)	2.12	2.29 (76.19%)	1.00 (33.33%)	2.00 (66.67%)	2.00 (66.67%)	Upper Medium	
5	Kakmari	2.09	2.29 (76.19%)	1.00 (33.33%)	1.83 (61.11%)	2.00 (66.67%)	Medium	
6	Kadamtala	2.06	2.14 (71.43%)	1.17 (38.89%)	1.67 (55.56%)	2.00 (66.67%)	Medium	
7	Purba Sovna (paschim)	2.06	2.21 (73.81%)	1.00 (33.33%)	1.83 (61.11%)	2.00 (66.67%)	Medium	
8	Uttar Chingra	2.06	2.29 (76.19%)	1.00 (33.33%)	1.83 (61.11%)	1.88 (62.50%)	Medium	
9	Molmolia	2.06	2.29 (76.19%)	1.00 (33.33%)	1.83 (61.11%)	1.88 (62.50%)	Medium	
10	Bolabunia Gopalnagar	1.97	2.21 (73.81%)	1.00 (33.33%)	1.67 (55.56%)	1.75 (58.33%)	Medium	

Sl. No.	Name of WMG	Average score (Out of max. score 3)	Theme-wise Progress of WMGs on a Scale of 0 to 3 Progress Levels (and in %)				Level of WMG performance	
			Establishment of Water Management Group and Water Management Partnership	Agriculture and economic development	Community participation in planning, implementation and use of water management infrastructures	Water Management and Operation and Maintenance (O&M) of Infrastructures	Self-assessment by WMGs	Polder Team's Assessment (indicated where it differs)
11	Maddhya Sovna (paschim)	1.94	2.14 (71.43%)	0.83 (27.78%)	1.83 (61.11%)	1.88 (62.50%)	Medium	
12	Maddhya Sovna (purba)	1.91	2.07 (69.05%)	0.92 (30.56%)	1.67 (55.56%)	1.88 (62.50%)	Medium	
13	Dakshin Chingra	1.88	2.07 (69.05%)	1.00 (33.33%)	1.67 (55.56%)	1.63 (54.17%)	Medium	
14	Paschim Sovna (Dakshin)	1.85	2.07 (69.05%)	0.92 (30.56%)	1.50 (50.00%)	1.75 (58.33%)	Medium	
15	Bagmara	1.68	1.86 (61.90%)	1.00 (33.33%)	1.67 (55.56%)	1.13 (37.50%)	Upper Low	

4.12 Polder 31 Part

As per their own assessment, all the WMGs of the polder belong to medium or upper medium performance category. The Polder Team agrees with the scoring by the WMGs. It being one of the new polders, the progress of the WMGs is reasonably good. It may be noted, however, that a number of WMGs of the polder have put low scores with respect to agriculture and economic development; thus this is the area where special attention should be given.

Sl. No.	Name of WMG	Average score (Out of max. score 3)	Theme-wise Progress of WMGs on a Scale of 0 to 3 Progress Levels (and in %)				Level of WMG performance	
			Establishment of Water Management Group and Water Management Partnership	Agriculture and economic development	Community participation in planning, implementation and use of water management infrastructures	Water Management and Operation and Maintenance (O&M) of Infrastructures	Self-assessment by WMGs	Polder Team's Assessment (indicated where it differs)
1	Nandankhali	2.28	2.71 (90.48%)	1.33 (44.44%)	2.00 (66.67%)	2.00 (66.67%)	Upper Medium	
2	Ghater khal	2.28	2.57 (85.71%)	2.17 (72.22%)	2.00 (66.67%)	2.13 (70.83%)	Upper Medium	
3	Kachorabad khal	2.25	2.43 (80.95%)	2.17 (72.22%)	2.00 (66.67%)	2.25 (75.00%)	Upper Medium	
4	Bunarabad Goriardanga	2.25	2.57 (85.71%)	2.00 (66.67%)	2.17 (72.22%)	2.13 (70.83%)	Upper Medium	
5	Thandamari khal	2.24	2.43 (80.95%)	1.08 (36.11%)	2.00 (66.67%)	2.13 (70.83%)	Upper Medium	
6	Rallia	2.24	2.43 (80.95%)	1.17 (38.89%)	2.00 (66.67%)	2.00 (66.67%)	Upper Medium	
7	Chardanga	2.13	2.36 (78.57%)	2.00 (66.67%)	2.00 (66.67%)	2.00 (66.67%)	Upper Medium	
8	Gawghora Maddhyapara	2.12	2.21 (73.81%)	1.08 (36.11%)	2.00 (66.67%)	2.00 (66.67%)	Upper Medium	
9	Bunarabad Maddhyapara	2.06	2.29 (76.19%)	1.17 (38.89%)	2.00 (66.67%)	2.00 (66.67%)	Medium	
10	Sapa Baro Bhuyan	2.06	2.43 (80.95%)	1.00 (33.33%)	2.00 (66.67%)	2.00 (66.67%)	Medium	

Sl. No.	Name of WMG	Average score (Out of max. score 3)	Theme-wise Progress of WMGs on a Scale of 0 to 3 Progress Levels (and in %)				Level of WMG performance	
			Establishment of Water Management Group and Water Management Partnership	Agriculture and economic development	Community participation in planning, implementation and use of water management infrastructures	Water Management and Operation and Maintenance (O&M) of Infrastructures	Self-assessment by WMGs	Polder Team's Assessment (indicated where it differs)
11	Razakhar beel	2.06	2.29 (76.19%)	1.17 (38.89%)	2.00 (66.67%)	2.00 (66.67%)	Medium	
12	Gharamari khal	1.97	2.21 (73.81%)	1.00 (33.33%)	2.00 (66.67%)	2.00 (66.67%)	Medium	

4.13 Polder 55/2A

As per their own assessment, all the WMGs of the polder belong to low and upper low performance categories. The Polder Team agrees with the scoring by the WMGs for most cases but, according to Polder Team, the performance levels of 4 WMGs are higher than what they themselves have rated. It is one of the new polders and WMGs were formed when the polder was under WMIP. The Polder Team experiences difficulties in its effort to facilitate WMG activities and thus to help them to improve their performance; difficulties arise specially from two things: (a) WMG areas of some WMGs are rather big – ‘it is difficult to bring people of two ends of a WMG area together with the result that cohesion building is difficult; and (b) ‘bad experience’ with WMIP – ‘there has been lot of promises but not enough actions’. Special efforts are needed to gain WMGs’ confidence on BGP.

Sl. No.	Name of WMG	Average score (Out of max. score 3)	Theme-wise Progress of WMGs on a Scale of 0 to 3 Progress Levels (and in %)				Level of WMG performance	
			Establishment of Water Management Group and Water Management Partnership	Agriculture and economic development	Community participation in planning, implementation and use of water management infrastructures	Water Management and Operation and Maintenance (O&M) of Infrastructures	Self-assessment by WMGs	Polder Team's Assessment (indicated where it differs)
1	Chownkhola Labilochan Lamna	1.72	1.86 (61.90%)	1.25 (41.67%)	1.67 (55.56%)	1.38 (45.83%)	Upper Low	Upper Medium
2	Sankipur Moishadi Naomala	1.53	1.29 (42.86%)	1.00 (33.33%)	2.00 (66.67%)	1.25 (41.67%)	Upper Low	Medium
3	Dakshin Dharandi Bazaar Sluice	1.32	1.36 (45.24%)	0.50 (16.67%)	1.67 (55.56%)	1.25 (41.67%)	Low	Upper Medium
4	Patabunia	1.09	1.50 (50.00%)	0.83 (27.78%)	0.33 (11.11%)	0.50 (16.67%)	Low	
5	Kharija Betagi Sluice	1.06	1.29 (42.86%)	0.50 (16.67%)	0.67 (22.22%)	0.75 (25.00%)	Low	
6	Hazirhat Sluice	1.05	1.71 (57.14%)	0.83 (27.78%)	0.00 (0.00%)	1.00 (33.33%)	Low	
7	Madhya Dharandi Chandipur	1.00	1.00 (33.33%)	0.50 (16.67%)	1.00 (33.33%)	1.00 (33.33%)	Low	
8	Char Moishadi Sluice	0.98	1.21 (40.48%)	1.17 (38.89%)	0.33 (11.11%)	0.75 (25.00%)	Low	Medium
9	Betagi Chikerband	0.94	1.00 (33.33%)	0.67 (22.22%)	1.00 (33.33%)	0.75 (25.00%)	Low	

Sl. No.	Name of WMG	Average score (Out of max. score 3)	Theme-wise Progress of WMGs on a Scale of 0 to 3 Progress Levels (and in %)				Level of WMG performance	
			Establishment of Water Management Group and Water Management Partnership	Agriculture and economic development	Community participation in planning, implementation and use of water management infrastructures	Water Management and Operation and Maintenance (O&M) of Infrastructures	Self-assessment by WMGs	Polder Team's Assessment (indicated where it differs)
10	Naomala Nizbotkazal Bhangra	0.94	1.29 (42.86%)	0.67 (22.22%)	0.00 (0.00%)	0.75 (25.00%)	Low	
11	Dharandi Kamlapur Adharsha	0.94	1.14 (38.10%)	0.33 (11.11%)	0.67 (22.22%)	1.00 (33.33%)	Low	
12	Bot O Char Balakati Krokmahal	0.94	1.14 (38.10%)	0.50 (16.67%)	0.33 (11.11%)	0.75 (25.00%)	Low	
13	Betagi Sankipur Radhasetaram	0.94	1.14 (38.10%)	0.33 (11.11%)	0.33 (11.11%)	1.00 (33.33%)	Low	
14	Akhoibaria Bahermouze	0.71	0.86 (28.57%)	0.67 (22.22%)	0.33 (11.11%)	0.25 (8.33%)	Low	

4.14 Polder 55/2C

It is one of the new polders; BGP activities have yet to take shape. As per their own assessment, all the WMGs of the polder belong to low performance categories. However, the Polder Team thinks that, though new, the performance levels of most WMGs of this polder are quite good; among them there are 2 WMGs which are doing very well (see the Table below).

Sl. No.	Name of WMG	Average score (Out of max. score 3)	Theme-wise Progress of WMGs on a Scale of 0 to 3 Progress Levels (and in %)				Level of WMG performance	
			Establishment of Water Management Group and Water Management Partnership	Agriculture and economic development	Community participation in planning, implementation and use of water management infrastructures	Water Management and Operation and Maintenance (O&M) of Infrastructures	Self-assessment by WMGs	Polder Team's Assessment (indicated where it differs)
1	Kalyankalash Prodhan Khal	1.42	2.00 (66.67%)	0.92 (30.56%)	0.83 (27.78%)	0.88 (29.17%)	Low	High
2	Madhupura Death Khan Khal	1.17	1.86 (61.90%)	0.83 (27.78%)	0.33 (11.11%)	0.50 (16.67%)	Low	Medium
3	Chilar Khal	1.14	1.79 (59.52%)	1.00 (33.33%)	0.33 (11.11%)	0.25 (8.33%)	Low	Upper Medium
4	Budaram Khal	1.12	1.86 (61.90%)	0.67 (22.22%)	0.00 (0.00%)	0.50 (16.67%)	Low	Medium
5	Bakulbaria Kharizza Betagi Sonamiar Khal	1.11	1.43 (47.62%)	0.83 (27.78%)	0.67 (22.22%)	0.75 (25.00%)	Low	Upper Low
6	Kharizzama Khal	1.11	2.00 (66.67%)	0.83 (27.78%)	0.00 (0.00%)	0.25 (8.33%)	Low	Medium
7	Rohitpura Khal	1.06	1.86 (61.90%)	0.50 (16.67%)	0.00 (0.00%)	0.50 (16.67%)	Low	Upper Medium
8	Kamarkhamali Khal	1.06	1.43 (47.62%)	0.83 (27.78%)	0.33 (11.11%)	0.75 (25.00%)	Low	Medium
9	Sutabaria Khal	1.05	1.57 (52.38%)	0.33 (11.11%)	1.00 (33.33%)	1.00 (33.33%)	Low	Medium
10	Guabaria Ranuar Khal	1.00	1.29 (42.86%)	0.83 (27.78%)	0.33 (11.11%)	0.75 (25.00%)	Low	Medium

Sl. No.	Name of WMG	Average score (Out of max. score 3)	Theme-wise Progress of WMGs on a Scale of 0 to 3 Progress Levels (and in %)				Level of WMG performance	
			Establishment of Water Management Group and Water Management Partnership	Agriculture and economic development	Community participation in planning, implementation and use of water management infrastructures	Water Management and Operation and Maintenance (O&M) of Infrastructures	Self-assessment by WMGs	Polder Team's Assessment (indicated where it differs)
11	Bhadrabariar Khal	1.00	1.71 (57.14%)	1.00 (33.33%)	0.00 (0.00%)	0.00 (0.00%)	Low	Medium
12	Lamna Guabaria Khal	0.91	1.43 (47.62%)	0.58 (19.44%)	0.00 (0.00%)	0.50 (16.67%)	Low	Medium
13	Basabaria Puler Khal	0.80	1.57 (52.38%)	0.33 (11.11%)	0.33 (11.11%)	0.50 (16.67%)	Low	Medium
14	Kocua Mohishdanga Khal	0.78	1.29 (42.86%)	0.67 (22.22%)	0.00 (0.00%)	0.25 (8.33%)	Low	High
15	Ulashir Khal	0.72	1.29 (42.86%)	0.33 (11.11%)	0.00 (0.00%)	0.50 (16.67%)	Low	Medium
16	Katakhali Khal	0.61	1.14 (38.10%)	0.33 (11.11%)	0.00 (0.00%)	0.25 (8.33%)	Low	Medium

4.15 Trends over time

Trend of progresses of WMGs may be drawn from the results of 2 rounds of participatory monitoring exercises. The results show that in general there has been an improvement in the performance of WMGs; in the 2nd round of participatory monitoring the overall average achievements of WMGs of all 14 polders are slightly higher than that of the 1st round participatory monitoring. As reported, the achievements of WMGs have been quite remarkable in the polders of Khulna Zone. Nonetheless, there have been some regressions in performance of WMGs with respect to different themes in some of the polder in Patuakhali Zone, notably in Polder 55/2A.

Trend of Average Achievements by WMGs

Zone	Polder	Theme-wise Progress of WMGs in Percentage										Overall average achievement in percentage	
		Establishment of Water Management Group and Water Management Partnership		Agriculture and economic development		Community participation in planning, implementation and use of water management infrastructures		Water Management and Operation and Maintenance (O&M) of Infrastructures					
		Nov-Dec 2016	Apr-May 2017	Nov-Dec 2016	Apr-May 2017	Nov-Dec 2016	Apr-May 2017	Nov-Dec 2016	Apr-May 2017	Nov-Dec 2016	Apr-May 2017		
Khulna	22	65.1	75.00	52.8	63.43	59.7	65.74	60.4	65.63	59.5	69.40		
	26	62.4	72.86	26.5	32.96	44.8	60.37	48.9	61.67	45.6	66.80		
	29	74.7	74.20	34.3	41.72	62.6	68.28	61.7	66.21	58.3	70.84		
	30	74.5	78.39	51.0	57.71	63.2	68.06	63.2	68.44	63.0	72.28		
	31 part	72.2	80.36	28.9	48.15	57.9	67.13	51.4	68.40	52.6	71.96		
Patuakhali	43_1A	60.0	66.84	38.3	43.65	45.2	46.83	49.7	40.48	48.3	55.52		
	43_2A	64.2	67.21	15.9	22.47	49.2	47.47	51.6	49.24	45.2	55.57		
	43_2B	56.0	62.45	22.1	34.72	38.1	54.70	46.1	55.13	40.6	58.46		
	43_2D	64.1	70.83	41.7	46.83	46.4	58.33	52.7	61.76	51.2	65.44		
	43_2E	69.2	71.83	39.8	34.72	63.4	66.67	60.4	57.64	58.2	65.58		
	43_2F	60.2	61.64	28.9	37.76	51.6	53.70	45.8	50.31	46.7	55.15		
	55_2A	50.0	42.35	19.0	23.21	36.1	24.60	35.1	29.46	35.1	36.09		
	55_2C	46.1	53.13	17.0	22.57	11.8	8.68	14.6	16.93	22.4	33.44		
Satkhira	2	63.6	66.09	23.8	33.19	41.0	48.28	47.4	48.56	43.9	58.87		

5. Final Remarks

- Only a few WMGs per polder could be reflected upon jointly by MRL Team and Polder Teams. It was a learning experience for all involved in reflection exercise. Polder Teams should continue doing reflection on the performance of all the WMGs and find out the “next steps to be taken”
- On the basis of reflection, Polder Teams can make action plan as to how they can help WMGs, especially on their weak area, to improve further.
- It is important that participatory monitoring results are discussed and reflected upon by WMGs in their monthly meetings, and make appropriate action plans for improvement; the CDFs should encourage and stimulate the WMGs to do this.

Annex-1: Outcome Challenges and Progress Markers

**Blue Gold Program
Bangladesh Water Development Board
Participatory Monitoring**

Name of WMG: **Polder No.** **No. of HHs in WMG Area:**
No. of Participants:- Female: **Male:** **(Total:**) **Date of Monitoring:**

Outcome Challenges		Progress Markers				Score	Remarks
		0	1	2	3		
1. Establishment of Water Management Group and Water Management Partnership							
1.1	The community people joined together and formed WMG, maintaining the procedure of WMG formation.	The community people have not been mobilized or are not united to form WMG.	Ad-hoc committee has been formed and the people of the area are being mobilized with the purpose of forming WMG but no EC has been elected yet.	Members have been enrolled from 55% households of the area for the purpose of forming WMG, election committee has been formed but no EC has been elected yet.	Members have been enrolled from 55% households of the area for the purpose of forming WMG, election committee has been formed and EC has been elected.		
1.2	Women in the EC of WMG have effective participation in decision making	Women EC members hardly attend any meetings.	Women EC members do attend meetings, but they do not	Women EC members attend meetings and take part in	Women EC members attend meetings and take part in		

Outcome Challenges		Progress Markers					Score	Remarks
		0	1	2	3			
	process of the WMG.		take part in the discussions for any discussion.	discussions, but their opinions are often not taken into account in decision making.	discussions, and their opinions are given due importance in decision making.			
1.3	WMG actively formulates and implements the WMG action plan (WAP).	WMG does not formulate any sort of action plan.	WMG is weak in WAP formulation and implementation.	WMG is capable of WAP formulation; but its endeavor or capacity to implement WAP is still limited.	WMG is capable of formulating comprehensive WAP and implements it.			
1.4	WMG has gone a long way in achieving its desired targets, namely proper water management and, as a result of water management, increased agricultural production and economic development of its members.	The WMG has no set targets or does not think about any target for itself.	WMG has/knows its desired targets, but it has not taken any initiative to achieve them yet.	WMG has/knows its desired targets but initiatives to achieve the targets are limited.	WMG knows its desired targets, and with combined efforts of its members it has gone a long way in achieving the desired targets.			

Outcome Challenges		Progress Markers					Score	Remarks
		0	1	2	3			
1.5	Water management partnership and coordination between the WMO, BWDB, LGIs and other stakeholders have developed, so that water management is done effectively with their joint efforts.	Water management partnership and coordination between the WMO, BWDB, LGIs and other stakeholders have not developed yet.	Water management partnership and coordination between the WMO, BWDB, LGIs and other stakeholders can be found active only occasionally.	Water management partnership and coordination between the WMO, BWDB, LGIs and other stakeholders are gradually growing/developing.	Water management partnership and coordination between the WMO, BWDB, LGIs and other stakeholders have developed. They are jointly and effectively doing water management.			
1.6	The WMG engages in water management related activities jointly with the UP and contributes resources (cash, materials or labour) for activities undertaken. Joint activities are like planning and implementing O&M of infrastructures,	The WMG and Union Parishad do not undertake any joint activity.	Some discussion has been initiated between WMG and UP regarding joint activities.	The WMG and Union Parishad undertake joint activities every now and then.	The WMG regularly implements water management related activities jointly with UP and contributes resources (cash, materials or labour) for activities undertaken.			

Outcome Challenges		Progress Markers					Score	Remarks
		0	1	2	3			
	emergency repair of infrastructures, resolving conflicts related to water management issues, etc.							
1.7	WMG as an organization has gained a well-regarded acceptance in its area so that the community people always consult it while taking decision on any important matter.	WMG has no acceptance in its area.	WMG has gained only a little acceptance in its area.	WMG has gained acceptance of moderate level in its area.	WMG as an organization has gained a well-regarded acceptance in its area. The community people consult it while taking decision on any important matter.			

Outcome Challenges		Progress Markers					Score	Remarks
		N.A.	0	1	2	3		
2. Agriculture and economic development								
2.1	Participants of Farmer Field School (FFS) are disseminating the learnings of FFS		Participants of FFS do not disseminate the learnings of FFS among other	Participants of FFS disseminate the learnings of FFS to only 25% farmers of the area, among	Participants of FFS disseminate the learnings of FFS to 50% of the male and	Participants of FFS disseminate the learnings of FFS to more than 70% of the male		

Outcome Challenges		Progress Markers					Score	Remarks
		N.A.	0	1	2	3		
	among other male and female farmers of the area.		male and female farmers of the area.	whom there are no or only a few female farmers.	female farmers of the area.	and female farmers of the area.		
2.2	Most male and female farmers of the area are responding positively to learnings on new agricultural technologies introduced by FFS, MFS or any other organization.		Male and female farmers of the area are not showing interest to adopt new agricultural technologies introduced by FFS, MFS or any other organization.	About 25% male and female farmers of the area are responding positively to learnings on new agricultural technologies introduced by FFS, MFS or any other organization.	About 50% male and female farmers of the area are responding positively to learnings on new agricultural technologies introduced by FFS, MFS or any other organization.	Most (70% or more) male and female farmers of the area are responding positively to learnings on new agricultural technologies introduced by FFS, MFS or any other organization.		
2.3	Farmers are supported by extension services (which means, receiving necessary advice from DAE or any other service provider - how to increase crop yield, e.g. what sort of land preparations are needed for		Farmers do not get any extension services.	Very few (25%) farmers get the support of extension services.	50% farmers get the support of extension services.	75% or more farmers get the support of extension services.		

Outcome Challenges		Progress Markers						
		N.A.	0	1	2	3	Score	Remarks
	different crops, use of quality seeds, ways of nurturing different crops, how to do pest control, from where/how to get good seeds, etc.)							
2.4	Participants of MFS are disseminating the learnings of MFS among other male and female farmers.		Participants of MFS are not sharing the learning from MFS with other farmers.	Participants of MFS disseminate the learnings of MFS to about 25% farmers of the area, among whom there are no or only a few female farmers.	Participants of MFS disseminate the learnings of MFS to about 50% of the male and female farmers of the area.	Participants of MFS disseminate the learnings of MFS to more than 70% of the male and female farmers of the area.		
2.5	Participant farmers of MFS have understanding of market system and they have become market oriented.		Participant farmers of MFS have no understanding of market system and have no market orientation.	MFS participants have adopted some new technologies but they have no understanding of market system.	Participant farmers of MFS have understanding of market system and have started taking new initiatives/ technologies.	Participant farmers of MFS are following appropriate business techniques and are adopting new initiatives/ technologies.		
2.6	WMG Members/ Farmers buy agricultural inputs as well as take		Farmers do not buy agricultural inputs jointly, nor do they	Only about 20% farmers buy agricultural inputs	35-40% farmers buy agricultural inputs jointly and take	More than 50% farmers buy agricultural inputs		

Outcome Challenges		Progress Markers						
		N.A.	0	1	2	3	Score	Remarks
	agricultural products to market jointly/as a group.		take agricultural products to market jointly.	jointly and take agricultural products to market as a group.	agricultural products to market as a group.	jointly and take agricultural products to market as a group.		

Outcome Challenges		Not Appl.	Progress Markers				Score	Remarks
			0	1	2	3		
3. Community participation in planning, implementation and use of water management infrastructures								
3.1	WMO members – through their representatives, of whom at least 25% are women, actively participated in developing infrastructure development plan and its implementation.		WMO members did not participate in developing infrastructure development plan.	WMO members – through their representatives – participated in infrastructure development plan formulation meetings but were not so active.	WMO members – through their representatives, of whom at least 25% are women – participated a little in infrastructure development plan formulation meetings and cooperated to some extent in implementation of the plan.	WMO members – through their representatives, of whom at least 25% are women – actively participated in infrastructure development plan formulation meetings and cooperated for smooth implementation of the plan.		
3.2	Community people have, under the leadership of WMG, participated in the process of construction and repair of water management infrastructures		Water management infrastructures have not been constructed or repaired.	Water management infrastructures are being constructed or repaired but there was no WMG / community people’s participation in	Water management infrastructures are being constructed or repaired and community people’s participation was there in planning of	Water management infrastructures have been constructed or repaired and community people’s participation was there in planning and implementation of infrastructures under the leadership of WMG.		

Outcome Challenges		Not Appl.	Progress Markers				Score	Remarks
			0	1	2	3		
				planning of infrastructures.	infrastructure under the leadership of WMG.			
3.3	Proper management of water management infrastructures has made utilization of water resources possible so that farmers are adopting new agricultural technologies.		There is no proper management of any water management infrastructure.	About 50% water management infrastructures are managed properly so that utilization of water resources is possible only in a limited area.	About 75% water management infrastructures are managed properly so that utilization of water resources is possible in the area to certain extent.	All water management infrastructures are managed properly so that utilization of water resources is possible in the area and farmers are adopting new agricultural technologies.		

Outcome Challenges		Progress Markers				Score	Remarks
		0	1	2	3		
4. Water Management and Operation and Maintenance (O&M) of Infrastructures							
4.1	Local people are participating in the operation of water management infrastructures under the leadership of WMG by contributing necessary	Local people do not participate in the operation of water management infrastructures.	Under the leadership of WMG the local people participate in the operation of 25% water management	Under the leadership of WMG, the local people participate in the operation of 50% water management	Under the leadership of WMG, the local people are participating in the operation of all water		

Outcome Challenges		Progress Markers					
		0	1	2	3	Score	Remarks
	resources (cash, materials or labour).		infrastructures.	infrastructures.	management infrastructures.		
4.2	BWDB is doing the maintenance (i.e. periodic & emergency maintenance) of water management infrastructures so that opportunity is created for proper and effective uses of water resources.	Water management infrastructures are not maintained by BWDB.	Water management infrastructures are occasionally maintained by BWDB but that is much less than the requirement.	Water management infrastructures are quite regularly maintained by BWDB, as a result, effective use of water resources has begun.	Water management infrastructures are effectively maintained by BWDB, as a result, there is effective water management in the area.		
4.3	Most people of the WMG area [i.e. WMG members and non-members under the leadership of WMG] pursue improvements of water management system, addressing/ coordinating water requirements of highland and lowland, jointly with BWDB and UP.	The WMG does not pursue improvements of the water management system.	The WMG realizes the importance of improving water management system but it does not take initiative to that end.	The WMG realizes the importance of improving water management system and it takes initiatives, but initiatives are insignificant/or of limited scale.	The local communities under the leadership of WMG take initiatives for improvement of the water management system, addressing/ coordinating water requirements of highland and		

Outcome Challenges		Progress Markers						
		0	1	2	3	Score	Remarks	
						lowland, jointly with BWDB and UP.		
4.4	The WMG Executive Committee assumes responsibilities of O&M of infrastructures and effectively implements them.	WMG Executive Committee is not aware of responsibilities of O&M of infrastructures.	WMG Executive Committee knows its responsibilities of O&M of infrastructures but has not taken any initiative yet.	WMG Executive Committee knows its responsibilities of O&M of infrastructures and in a few instances it has taken initiatives.	WMG Executive Committee knows its responsibilities of O&M of infrastructures and carries them out effectively.			

Annex-2 : Glossary

অংশগ্রহণমূলক পরিবীক্ষণ (মনিটরিং) ফর্ম ব্যবহার সহায়িকা

অংশগ্রহণমূলক পরিবীক্ষণ কী?

পরিবীক্ষণ বা মনিটরিং হল কোন চলমান কাজের অগ্রগতি পর্যবেক্ষণ করা। অর্থাৎ মনোযোগ দিয়ে দেখা, পর্যালোচনা করে দেখা—লক্ষ্য অর্জনের দিকে অগ্রগতি কতদূর হয়েছে, অগ্রগতিতে কোন সমস্যা হচ্ছে নাকি তা যেন জানা যায়। আর পরিবীক্ষণ অংশগ্রহণমূলক হওয়া মানে এই পরিবীক্ষণ প্রকল্পের জনগণ করবে। আমাদের এই অংশগ্রহণমূলক পরিবীক্ষণের মূল কথা হচ্ছে – পানি ব্যবস্থাপনা সংগঠনের সদস্যরাই পরিবীক্ষণের প্রধানকারিগর। তারাই বিবেচ্য বিষয়সমূহের অগ্রগতি পর্যবেক্ষণ করবে।

আমাদের এই অংশগ্রহণমূলক পরিবীক্ষণের বিষয়বস্তু কি?

eoyগোল্ড-এর মাধ্যমে যেসব কাজ হচ্ছে(অর্থাৎ, পানি ব্যবস্থাপনা অবকাঠামো উন্নয়ন, পানি ব্যবস্থাপনা সংগঠন গঠন ও তা শক্তিশালীকরণ, কৃষি উন্নয়ন ও কৃষক বাজারমুখি করণ), এইসব কাজের ফলে এক ধরনের পরিবর্তন আমরা আশা করি। সেই পরিবর্তন হবেভালোর জন্য, প্রকল্প এলাকার মানুষের উন্নতির জন্য – সেই পরিবর্তনকে ‘টেকসই পরিবর্তন’ বলতে পারি। টেকসই পরিবর্তন অর্জন করতে পারলে তা প্রকল্পের চূড়ান্ত লক্ষ্যের পথে অবদান রাখবে। বর্তমান পরিবীক্ষণের বিষয়বস্তু হচ্ছে – টেকসই পরিবর্তন অর্জনে অগ্রগতি কতদূর হয়েছে তা দেখা।

সাধারণ নির্দেশনা:

- ১। অংশগ্রহণমূলক পরিবীক্ষণ WMG-এর ব্যবস্থাপনাকমিটির সদস্যদের দ্বারা সম্পন্ন হবে। এই উদ্দেশ্য নিয়ে তাঁরা মিটিং করবেন এবং কমপক্ষে কমিটির ১০ জন সেই মিটিং-এ উপস্থিত থাকবেন। তবে ব্যবস্থাপনাকমিটি ইচ্ছা করলে পরিবীক্ষণের জন্য আয়োজিত সভায় সাধারণ সদস্যদের মধ্য থেকেও কাউকে অন্তর্ভুক্ত করতে পারে।
- ২। ব্যবস্থাপনাকমিটির সদস্যরা আলোচনার মাধ্যমে সিদ্ধান্ত নিবেন বিবেচ্য বিষয়ের অবস্থা কি বা অগ্রগতিকতদূর হয়েছে বা অগ্রগতির পর্যায় কি। [*পরের পৃষ্ঠায় ‘অগ্রগতির পর্যায়’ নিয়ে আলোচনা দেখুন।] আলোচনায় সকল উপস্থিত সদস্যদের অংশগ্রহণ থাকা কাম্য।
- ৩। মনে রাখা জরুরী যে, টেকসই পরিবর্তন অর্জনের ক্ষেত্রে অগ্রগতি কতদূর হয়েছে তা **সঠিকভাবে** নির্ণয় করা উচিত। **পরিবর্তনের অগ্রগতি সম্পর্কে ভুল তথ্য দিয়ে (অর্থাৎ, অগ্রগতি কম বা বেশী দেখায়) কারো লাভ হবে না।**

বি.দ্র.:

- ১। পরিবীক্ষণ অনুশীলন/আলোচনা শেষে eoyগোল্ড-এর কর্মকর্তা/কর্মচারী যিনি উপস্থিত থাকবেন তিনি ফর্ম থেকে স্কার নিয়ে ODK প্রোগ্রামের মাধ্যমে Tablet-এ তুলে নিবেন।
- ২। পূরণকৃত ফর্মটি WMG যন্ত্র সহকারে সংরক্ষণ করবে। এর অন্যতম উদ্দেশ্য হচ্ছে – WMG যেন পরিবীক্ষণের ফলাফল নিয়ে মাঝে মাঝে নিজেদের মধ্যে আলোচনা করে এবং যেখানে যেখানে অগ্রগতি কম সেইসব জায়গায় যেন বিশেষ মনোযোগ দেয়।

Blue Gold Program

নিটরিং ফর্ম ব্যবহারের সুবিধার জন্য ফর্মে ব্যবহৃত কিছু কিছু শব্দ ও আলোচিত বিষয়ের ব্যাখ্যা নিচে দেয়া হল। কোন শব্দের বা বিষয়ের ব্যাখ্যা এখানে দেয়া হয়েছে তা বুঝার জন্য ফর্মে সেই সব শব্দ বা শব্দসমষ্টির নিচে দাগ দেয়া হয়েছে।

বিষয় নম্বর	ব্যাখ্যা
ছকের প্রথম লাইন	<ul style="list-style-type: none"> • “কাজ্জিত পরিবর্তনের লক্ষ্যমাত্রা”: eOYগোল্ড প্রোগ্রামের বিভিন্ন কর্মকাণ্ডের লক্ষ্য বা উদ্দেশ্য হচ্ছে – এলাকার জনগণের অর্থনৈতিক অবস্থা ও তাদের জীবনযাত্রার মান-এ পরিবর্তন আসুক, উন্নত হোক। এই ভাল পরিবর্তন আমরা সবাই চাই– এই সব পরিবর্তন ‘কাজ্জিত পরিবর্তন’; তাই ১ম কলামে যা যা বলা আছে, সেই সবই আমাদের সবার মনের চাওয়া, আমাদের ‘কাজ্জিত পরিবর্তন’। • “অগ্রগতির পর্যায়”: যে কোন পরিবর্তন ধাপে ধাপে অর্জিত হয়। একই ভাবে কোন কাজ্জিত পরিবর্তন অর্জনরাতারাতি সম্ভব নয়। এখানে কাজ্জিত পরিবর্তন অর্জনেরবিভিন্ন পর্যায়কে ‘অগ্রগতির পর্যায়’ বলা হচ্ছে। মোট ৪টি পর্যায়ের কথা বলা হয়েছে: পর্যায় ‘০’ মানে ‘কোন’ অগ্রগতি অর্জিত হয়নি; পর্যায় ‘১’ হচ্ছে অগ্রগতির প্রাথমিক পর্যায়; পর্যায় ‘২’ হচ্ছে অগ্রগতির মাঝামাঝি পর্যায়; এবং পর্যায় ‘৩’ মানে অগ্রগতি যতটুকু সম্ভব বা কাজ্জিততা পুরোপুরি অর্জিত হয়েছে। একেকটিবিষেচ্য বিষয়ের ক্ষেত্রে পর্যায় ‘০’, ‘১’, ‘২’ ও ‘৩’ বলতে কি বুঝানো হচ্ছে তাছকেউল্লেখ আছে। বি.দ্র.: কোন কারণে মিটিং-এ উপস্থিত ব্যবস্থাপনাকমিটির সদস্যরাকোন একটি বিষেচ্য বিষয়ে ‘অগ্রগতির পর্যায়’-এর ব্যাপারে একমত হতে না পারলে, তার মাঝামাঝি ‘স্কোর’ দিবেন। যেমন, কয়েকজন যদি মনে করেন যে সেই বিষয়ে অগ্রগতির পর্যায় ‘০’ আর অন্যরা মনে করেন অগ্রগতির পর্যায় ‘১’, তবে ‘স্কোর’-এর ঘরে ‘০.৫’ লিখবেন; তদ্রূপ, অগ্রগতির পর্যায় ‘১.৫’ বা ‘২.৫’ হতে পারে। • “মন্তব্য”: আলোচ্য বিষয়ের ব্যাপারে কোন বিশেষ মতামত থাকলে তা মন্তব্যের কলামে লিখতে হবে।
১।	<ul style="list-style-type: none"> • “পানি ব্যবস্থাপনা অংশীদারিত্ব”: এলাকার পানি ব্যবস্থাপনার জন্য WMG বিশেষভাবে দায়িত্বপ্রাপ্ত কিন্তু এলাকায় সুষ্ঠু পানি ব্যবস্থাপনা স্থাপন করা WMG-এর একক চেষ্টায় সম্ভব নয়; তাই পানি ব্যবস্থাপনার দায়িত্ব WMG-এর একার নয়। পানি ব্যবস্থাপনায় অন্যান্য অংশীদার হল পানি উন্নয়ন বোর্ড (বাপাউবো) , স্থানীয় সরকার প্রতিষ্ঠান ও এলাকার জনসাধারণ; সবার যৌথ চেষ্টায় এলাকার সুষ্ঠু পানি ব্যবস্থাপনা স্থাপন করা সম্ভব।
১.১	<ul style="list-style-type: none"> • “ঐক্যবদ্ধ”: এখানে ঐক্যবদ্ধ বলতে বুঝানো হয়েছে যে, এলাকার মানুষ WMG গঠনের জন্য একমত এবং সংগঠিত। • ““তালিকাভুক্ত””: WMG-এর সদস্য হওয়াকে “তালিকাভুক্ত” হওয়া বুঝানো হয়েছে।
১.২	<ul style="list-style-type: none"> • “সিদ্ধান্ত গ্রহণ প্রক্রিয়া”: কোন একটি ব্যাপারে সিদ্ধান্ত গ্রহণের জন্য WMG-র ব্যবস্থাপনাকমিটি যখন আলোচনায় বসে এবং আলোচ্য বিষয়ের বিভিন্ন দিক নিয়ে বিভিন্ন জন কথা বলে, তাকেই সিদ্ধান্ত গ্রহণের প্রক্রিয়া বলা হচ্ছে।
১.৩	<ul style="list-style-type: none"> • “WMG-র কর্মপরিকল্পনাতৈরি ও বাস্তবায়ন”: এখানে “কর্মপরিকল্পনাতৈরি” বলতে WMG নিজ প্রতিষ্ঠান এবং নিজেদের ও নিজ এলাকার উন্নতির জন্য, অর্থাৎ WMG শক্তিশালীকরণ, সুষ্ঠু পানি ব্যবস্থাপনা, পরিচালন ও রক্ষণাবেক্ষণ, কৃষির উন্নতি, পণ্য বাজারজাতকরণ ব্যবস্থা ও ব্যবসা-বাণিজ্যের উন্নতি, ইত্যাদির জন্য পরিকল্পনা গ্রহণ করাকে বুঝায়। এবং সেই পরিকল্পনা অনুসারে কাজ করাটাই হল- কর্মপরিকল্পনা “বাস্তবায়ন”।

Blue Gold Program

বিষয় নম্বর	ব্যাখ্যা
১.৪	<ul style="list-style-type: none"> • “(পানিব্যবস্থাপনাদলের) কাঙ্ক্ষিতলক্ষ্য”:WMG সংগঠন হিসেবে যে লক্ষ্য অর্জন করতে চায় বা উন্নতির যে জাগাটিতে পৌছাতে চায়, তাই WMG-রজন্যকাঙ্ক্ষিতলক্ষ্য বলা যেতে পারে। WMG-যদি ভাল কিছু অর্জন করতে চায়, WMG-কেই তার নিজের জন্য একটা লক্ষ্য ঠিক করতে হবে, WMG-রএকটা স্বপ্ন থাকতে হবে। উদাহরণ স্বরূপ বলা যায় – কোন WMG-রস্বপ্ন হতে পারে:সংগঠনশক্তিশালীহবে, সুষ্ঠুপানি ব্যবস্থাপনাপ্রতিষ্ঠিতহবে, কৃষিউৎপাদন বাড়বে, সদস্যদের অবস্থার উন্নতি হবে,ব্যবসা-বানিজ্যেরউন্নতিহবে,ইত্যাদি।
১.৫	<ul style="list-style-type: none"> • “পানিব্যবস্থাপনাসংগঠন”:পানিব্যবস্থাপনাসংগঠন বলতে WMG,WMAও WMFসবগুলোকে বুঝায়। • “অন্যান্যস্বার্থসংশ্লিষ্টদের”:পোল্ডার এলাকার পানি ব্যবস্থাপনা কার্যক্রমে যাদের ভূমিকা আছে, পানি ব্যবস্থাপনার উপকার যারা পায় এবংপানি ব্যবস্থাপনা কার্যক্রমের ফলে যাদের ক্ষতি হয় – তাদের সকলকে পানিব্যবস্থাপনাবিশয়ে স্বার্থসংশ্লিষ্ট পক্ষ বলা যায়। এখানে ‘অন্যান্য’ স্বার্থসংশ্লিষ্টদের বলতেএল জি ই ডি, কৃষি অধিদপ্তর, মৎস্য অধিদপ্তর,এলাকার NGO, ব্যবসায়ী – সকলকেই বুঝানো হচ্ছে। • “পানিব্যবস্থাপনাবিশয়কঅংশীদারিত্ব”:পোল্ডার এলাকায় পানি ব্যবস্থাপনা করতে হলে এলাকার মানুষের বা পানি ব্যবস্থাপনা সংগঠনের বিশেষ ভূমিকা আছে,তবে তা এককচেষ্টায় সম্ভব নয়; পানি ব্যবস্থাপনা প্রতিষ্ঠার দায়িত্বও এলাকার মানুষের বা পানি ব্যবস্থাপনা সংগঠনের একার নয়। পোল্ডার এলাকায় যে সব সরকারি প্রতিষ্ঠানের (যেমন, পানিউন্নয়নবোর্ড, স্থানীয়সরকারপ্রতিষ্ঠান, এল জি ই ডি, কৃষি অধিদপ্তর, মৎস্য অধিদপ্তর, ইত্যাদি) কার্যক্রম আছে, তাদের সবার কার্যক্রম কোন না কোন ভাবে পানি ব্যবস্থাপনাকে প্রভাবিত করে। অর্থাৎ, এলাকার মানুষের যেমন, এইসব প্রতিষ্ঠানেরও পানিব্যবস্থাপনায় অংশ আছে। এলাকার মানুষের বা পানি ব্যবস্থাপনা সংগঠনের সাথে তাদের সবার পানিব্যবস্থাপনাবিশয়কঅংশীদারিত্ব ও সহযোগিতা গড়ে উঠার প্রয়োজন আছে। সুষ্ঠু পানি ব্যবস্থাপনা প্রতিষ্ঠা করতে হলে এইসব প্রতিষ্ঠানকে পানি ব্যবস্থাপনায় অংশীদারিত্বের বা সহযোগিতার দায়িত্বের কথা মনে করে দিতে হবে এবং তাদের সবার কাজের সমন্বয়তৈরি করতে হবে যেন তাদের কাজ পানি ব্যবস্থাপনায় বাধা না হয় বরং সহায়ক হয়।
১.৬	<ul style="list-style-type: none"> • “পানি ব্যবস্থাপনা সংক্রান্ত যৌথ কর্মকাণ্ড”:যৌথকর্মকাণ্ড হতে পারে –অবকাঠামো পরিচালনওরক্ষণাবেক্ষণবিশয়কপরিকল্পনাওতারবাস্তবায়ন, অবকাঠামোসমূহেরজরুরীমেরামত, পানি ব্যবস্থাপনা বিষয়ে দ্বন্দ্বনিরসন, ইত্যাদি।
১.৭	<ul style="list-style-type: none"> • “গ্রহণযোগ্যতা অর্জন”:গ্রহণযোগ্যতা অর্জনবলা যায়, যখন অন্যেরা প্রতিষ্ঠানটিকে গুরুত্ব দেয় বা সম্মানের সাথে দেখে; এলাকার কোন গুরুত্বপূর্ণ সিদ্ধান্ত তাকে না জানিয়ে নেয়া হয় না।
১-সা. বি.	<ul style="list-style-type: none"> • “সার্বিক বিবেচনায় WMG-র অবস্থা এবং পানিব্যবস্থাপনাঅংশীদারিত্ব”: বিবেচ্য বিষয়ের বিভিন্ন খুঁটিনাটি দিক আলাদা আলাদা না ভেবে, সামগ্রিক বিবেচনায় সেই বিষয়ের অবস্থার মূল্যায়ন করাকে ‘সার্বিক বিবেচনা’ বলা হচ্ছে।এখানে জানতে চাওয়া হচ্ছে –সামগ্রিক বিবেচনায় WMG-র অবস্থা এবং পানিব্যবস্থাপনাবিশয়কঅংশীদারিত্ব ও সহযোগিতা কোন পর্যায়ে।
২।	<ul style="list-style-type: none"> • “কৃষি ও অর্থনৈতিক উন্নয়ন”: এখানে ‘কৃষি’ বৃহত্তর অর্থে বুঝতে হবে। ‘কৃষি’ বলতে সব মাঠের ফসল চাষ, শাকসবজি চাষ, হাঁস-মুরগি পালন, গবাদি পশু পালন এবং মৎস্য চাষ বুঝাবে। মাঠ ফসল হল: দানাদার ফসল যেমন – ধান, গম,ভুট্টা; ডাল জাতীয় ফসল যেমন – মুগ, মসুর, খেসারী; তৈল জাতীয় ফসল যেমন – সরিষা, বাদাম, সূর্যমুখী, ইত্যাদি; এবং তরমুজ। কৃষির সাথে সম্পর্কযুক্ত ‘অর্থনীতি’ হল – বাজার ব্যবস্থা ও ব্যবসা-বানিজ্যের সাথে যুক্ত কর্মকাণ্ড। বাজার ব্যবস্থার অংশ হল –ক্রোতা ও বিক্রোতা;ক্রয়-বিক্রয়ের ক্ষেত্রে তাদের সিদ্ধান্ত নির্ভর করে‘বাজার তথ্য’র উপরে। বাজার তথ্য বলতে বুঝায় – পণ্যের চাহিদা, পণ্যের সহজ প্রাপ্যতা, পণ্যের দর, স্থান, ইত্যাদি। কৃষির সাথে ব্যবসা-বানিজ্যের সম্পর্ক খুবই স্বাভাবিক। কৃষি কাজই কৃষকের ব্যবসা। কৃষি কাজে কিভাবে খরচ কমানো যায় এবং কিভাবে উৎপাদিত পণ্যের বেশী মূল্য পাওয়া যায় – সেই সব ব্যাপারে

Blue Gold Program

বিষয় নম্বর	ব্যাখ্যা
	কৌশল গ্রহণ করলেই বলা যায় যে কৃষক ব্যবসার সাথে যুক্ত।
২ নং অংশে ছকের প্রথম লাইন	<ul style="list-style-type: none"> “প্রযোজ্য নয়”: কোন কোন WMG এলাকায় FFS বা MFS নাও থাকতে পারে বা কখনো ছিল না; তখন ২.১, ২.২, ২.৪ ও ২.৫-এর ক্ষেত্রে ‘প্রযোজ্য নয়’ লিখতে হবে, আর সেই কারণেই ‘স্কেলার’-এর কলামে কোন সংখ্যা লিখা যাবে না।
২.২	<ul style="list-style-type: none"> “নতুনকৃষিপ্রযুক্তি”: নতুনকৃষিপ্রযুক্তির কয়েকটি উদাহরণ হল –নতুনজাতের ফসল, উচ্চ ফলনশীল জাত, উন্নতবীজ, উন্নত চাষ পদ্ধতি, কৃষি যন্ত্রপাতির ব্যবহার ইত্যাদি, উন্নতজাতের হাঁস-মুরগি, হাঁস-মুরগি পালনের উন্নত পদ্ধতি, মাছওগবাদিপশু পালনের উন্নত পদ্ধতি, ইত্যাদি।
২.৩	<ul style="list-style-type: none"> “কৃষিসম্প্রসারণসেবা”: ফসলের উৎপাদন বৃদ্ধি জন্য কৃষকদের প্রয়োজনীয় পরামর্শ পাওয়া যেমন, কোন ফসলের জন্য কিভাবে জমি প্রস্তুত করতে হবে, ভাল বীজের ব্যবহার, কি কি ভাবে ফসলের যত্ন নিতে হবে, কিভাবে ফসলের রোগ-বালাই দমন করতে হবে, ভাল বীজ কিভাবে পাওয়া যাবে, ইত্যাদি। সেবার উৎস হতে পারে eDyগোল্ড কর্মী, সরকারী অফিস/কর্মী, কোন NGO, রিসোর্স ফার্মার, কন্টাক্ট ফার্মার, ইত্যাদি।
২.৫	<ul style="list-style-type: none"> “বাজার সচেতনতা”: বাজারে পণ্যের দাম কিভাবে এবং কি কারণে উঠানামা করে, বাজারে কোন জিনিসের চাহিদা বেশী আর কোন জিনিসের চাহিদা কম, বাজারে কোন জিনিসের দাম বেশী আর কোন জিনিসের দাম কম, চাহিদা কম বা বেশী হওয়ার কারণ, কোন বাজারে পণ্যের বেশী দাম, দাম কম বা বেশী হওয়ার কারণ, ইত্যাদি ব্যাপারে অবগত ও সচেতন থাকাকে বাজারসচেতনতা বলে। “বাজারমুখী”: কৃষক বাজারমুখী হওয়ামানে – সেক্ষিকাজকে ব্যবসাহিসে বেদেখে, কৃষিকাজের লাভক্ষতিবিবেচনাকরে ফসল নির্বাচন করে, উন্নতকৃষি প্রযুক্তি ব্যবহার করে, পণ্য বাজারজাত করার কথা ভাবে, কোন বাজারে তার কৃষি পণ্য বিক্রি করলে সে বেশী লাভবান হবে তা বিবেচনাকরে পণ্যবিক্রির জন্য বাজার নির্বাচন করে, সে ‘বাজারসংযোগ’ তৈরি করে, একত্রে চাষের উপকরণ ক্রয় ও একত্রে ফসল বাজারজাত করার কথা ভাবে। সংক্ষেপে, বেশী লাভের উদ্দেশ্যে পরিকল্পিত কৃষিকাজই হল বাজারমুখী কৃষি কাজ।
২-সা. বি.	<ul style="list-style-type: none"> “সার্বিক বিবেচনায় কৃষি ও অর্থনৈতিক উন্নয়ন”: বিবেচ্য বিষয়ের বিভিন্ন খুঁটিনাটি দিক আলাদা আলাদা না ভেবে, সামগ্রিক বিবেচনায় সেই বিষয়ের অবস্থার মূল্যায়ন করাকে ‘সার্বিক বিবেচনা’ বলা হচ্ছে। এখানে জানতে চাওয়া হচ্ছে – সামগ্রিক বিবেচনায় কৃষি ও অর্থনৈতিক উন্নয়নের অবস্থা কোন পর্যায়ে।
৩।	<ul style="list-style-type: none"> “পানি ব্যবস্থাপনা অবকাঠামো”: পানি ব্যবস্থাপনার জন্য, অর্থাৎ পোল্ডারের ভিতরে প্রয়োজনমত পানি ঢুকানো এবং অতিরিক্ত পানি বের করে দেয়ার জন্য, যেসব অবকাঠামো ব্যবহার হয়, ঐসব অবকাঠামোকে ‘পানি ব্যবস্থাপনা অবকাঠামো’ বলে। পানি উন্নয়ন বোর্ডের আওতায় পোল্ডার এলাকায় সাধারণত বেড়ীবাঁধ, ফ্লাইস-গেট, ইনলেট ও আউটলেট তৈরি এবং খাল খনন করা হয়। “পরিকল্পনা, বাস্তবায়ন ও ব্যবহার”: এখানে পোল্ডার এলাকায় বেড়ীবাঁধ, ফ্লাইস-গেট, ইনলেট ও আউটলেট তৈরি এবং খাল খননের জন্য পরিকল্পনা গ্রহণ, সেই পরিকল্পনা বাস্তবায়ন ও তৈরি অবকাঠামো ব্যবহারের কথা বলা হচ্ছে।
৩ নং অংশে ছকের প্রথম লাইন	<ul style="list-style-type: none"> “প্রযোজ্য নয়”: কোন কোন WMG এলাকায় পানি ব্যবস্থাপনা অবকাঠামো নাও থাকতে পারে; তখন ৩.২ ও ৩.৩-এর ক্ষেত্রে ‘প্রযোজ্য নয়’ লিখতে হবে, আর সেই কারণেই ‘স্কেলার’-এর কলামে কোন সংখ্যা লিখা যাবে না। তবে যদি সেই WMG-র সদস্যরা অন্য কোন পার্শ্ববর্তী WMG-র সাথে যৌথভাবে ৩.২ ও ৩.৩-এ উল্লেখিত কর্মকাণ্ডে অংশগ্রহণ করে থাকে, তবে ‘প্রযোজ্য নয়’ না লিখে ‘স্কেলার’-এর কলামে অগ্রগতির পর্যায় নির্দেশক সংখ্যা লিখতে হবে।
৩.১	<ul style="list-style-type: none"> “অবকাঠামো উন্নয়ন পরিকল্পনা তৈরিতে সক্রিয়ভাবে অংশগ্রহণ”: পোল্ডার এলাকায় পানি ব্যবস্থাপনার জন্য কি কি নতুন অবকাঠামো প্রয়োজন বা কোন কোন অবকাঠামো স্বেচ্ছায় করা প্রয়োজন তা নির্ধারণ করার জন্য সংশ্লিষ্ট সবাইকে নিয়ে যে মিটিং হয় তাকেই ‘অবকাঠামো উন্নয়ন পরিকল্পনা’ তৈরির মিটিং বলা

Blue Gold Program

বিষয় নম্বর	ব্যাখ্যা
	<p>হয়। সেই মিটিং-এ পানিব্যবস্থাপনাসংগঠনের সদস্যদের পক্ষে তাদের প্রতিনিধি থাকার কথা। যদি সেই মিটিং-এ প্রতিনিধিরা আলোচনায় অংশগ্রহণ করে থাকেন তবে তাকেই পরিকল্পনাতৈরিতে সক্রিয়ভাবে অংশগ্রহণ বলা যায়।</p> <ul style="list-style-type: none"> • “(অবকাঠামো উন্নয়ন পরিকল্পনার) বাস্তবায়নে সক্রিয়ভাবে অংশগ্রহণ” : সেই যৌথভাবে তৈরি করা পরিকল্পনা অনুসারে কাজ করা হল পরিকল্পনার বাস্তবায়ন। এখানে জানতে চাওয়া হচ্ছে যে, সেই পরিকল্পনা অনুসারে কাজ করার সময় পানিব্যবস্থাপনাসংগঠনের সদস্যগণ কি সহযোগিতা করেছেন কিনা। যেমন, পরিকল্পনাবাস্তবায়নের জন্য বা কাজ করার জন্য যে জমি লাগে তা পেতে সহযোগিতা করেছেন কিনা।
৩.২	<ul style="list-style-type: none"> • “অবকাঠামো সমূহের উন্নয়ন ও মেরামত করার প্রক্রিয়া” : এখানে ‘উন্নয়ন’ বলতে নতুন অবকাঠামো তৈরি এবং ‘উন্নয়ন ও মেরামত করার প্রক্রিয়া’ বলতে অবকাঠামো তৈরি বা মেরামতের জন্য পরিকল্পনা গ্রহণ ও সেই পরিকল্পনা অনুসারে কাজ করাকে বুঝাচ্ছে।
৩.৩	<ul style="list-style-type: none"> • “পানিব্যবস্থাপনা অবকাঠামো সূচ্য ব্যবস্থাপনা” : এখানে অবকাঠামো সূচ্য ব্যবস্থাপনা বলতে এলাকার বেশীরভাগ মানুষের প্রয়োজন অনুসারে অবকাঠামো পরিচালনা করার পরিকল্পনা ও সেই পরিকল্পনার বাস্তবায়ন করা বুঝাচ্ছে। • “পানিসম্পদ” : পানি একটি সম্পদ। এই সম্পদের সূচ্য ব্যবহারের মাধ্যমেই এলাকার কৃষি ও অর্থনীতির উন্নতি সম্ভব। • “নতুন কৃষি প্রযুক্তি” : নতুন কৃষি প্রযুক্তির কয়েকটি উদাহরণ হল - নতুন জাতের ফসল, উচ্চ ফলনশীল জাত, উন্নত বীজ, উন্নত চাষ পদ্ধতি, কৃষি যন্ত্রপাতির ব্যবহার ইত্যাদি, উন্নত জাতের হাঁস-মুরগি, হাঁস-মুরগি পালনের উন্নত পদ্ধতি, মাছ ও গবাদিপশু পালনের উন্নত পদ্ধতি, ইত্যাদি।
৩-সা. বি.	<ul style="list-style-type: none"> • “সার্বিক বিবেচনায় অবকাঠামো পরিকল্পনা, বাস্তবায়ন ও ব্যবহারে এলাকার মানুষের অংশগ্রহণ” : বিবেচ্য বিষয়ের বিভিন্ন খুঁটিনাটি দিক আলাদা আলাদা না ভেবে, সামগ্রিক বিবেচনায় সেই বিষয়ের অবস্থার মূল্যায়ন করাকে ‘সার্বিক বিবেচনা’ বলা হচ্ছে। এখানে বিবেচনার মূল বিষয় হল - অবকাঠামোর পরিকল্পনা, বাস্তবায়ন ও ব্যবহারে এলাকার মানুষের অংশগ্রহণ সার্বিক বিবেচনায় কেমন।
৪।	<ul style="list-style-type: none"> • “পানি ব্যবস্থাপনা” : পানি ব্যবস্থাপনার অর্থ পোন্ডারের ভিতরে এলাকার মানুষের পানির বিভিন্ন প্রয়োজনের জন্য, যেমন - ফসল চাষাবাদ, মাছ চাষ, গৃহস্থালি কাজ, ইত্যাদির জন্য, পানির ব্যবস্থা করা এবং অতিরিক্ত পানি সরানো। পানি ব্যবস্থাপনার প্রয়োজনে ফ্লাইসগেট ও ইনলেট দিয়ে পোন্ডারের ভিতরে পানি ঢুকানো হয় এবং ফ্লাইসগেট ও আউটলেট দিয়ে পানি পোন্ডারের বের করা হয়; আর পোন্ডারের ভিতরে বিভিন্ন এলাকায় পানি সরবরাহের জন্য পরিষ্কার বা বাধাহীন খালের প্রয়োজন। এই সবই পানি ব্যবস্থাপনার অংশ। • “পরিচালন ও রক্ষণাবেক্ষণ” : ‘পরিচালন ও রক্ষণাবেক্ষণ’ কথা দুটি পানি ব্যবস্থাপনা অবকাঠামোর ক্ষেত্রে বলা হয়ে থাকে। যেমন, ফ্লাইসগেট, আউটলেট ও ইনলেট পরিচালনা করার অর্থ এইসবের গেট খোলা ও বন্ধ করার মাধ্যমে পোন্ডারের ভিতরে পানি ঢুকানো বা বের করে দেয়া। এটাকে অবকাঠামো পরিচালনা বলা হয়। আর অবকাঠামোর রক্ষণাবেক্ষণ মানে ফ্লাইসগেট, আউটলেট, ইনলেট ও খাল সচল রাখার জন্য প্রয়োজনীয় দেখ-ভাল করা। যেমন, ফ্লাইসগেট, আউটলেট ও ইনলেট-এর ক্ষেত্রে গ্রিজ দেয়া, রং করা, গেটের উভয় পাশে পরিষ্কার রাখা, খাল পরিষ্কার রাখা, বেড়ীবাঁধে ছোট-খাট গর্ত ও ভাঙ্গায় মাটি দেয়া, ইত্যাদি।
৪.২	<ul style="list-style-type: none"> • “পানি উন্নয়ন বোর্ড পানিব্যবস্থাপনা অবকাঠামো সমূহের রক্ষণাবেক্ষণ করে” : পানি উন্নয়ন বোর্ড - এর দায়িত্ব নির্দিষ্ট সময় অন্তর রক্ষণাবেক্ষণ ও আপদকালীন রক্ষণাবেক্ষণ করা, অর্থাৎ অবকাঠামোর বড় রকমের রক্ষণাবেক্ষণের বা মেরামতের দায়িত্ব পানি উন্নয়ন বোর্ডের; যেমন, ফ্লাইসগেটের কপাট নষ্ট হলে বা ভেঙে গেলে তা মেরামত, বেড়ীবাঁধে বড় রকমের ভাঙ্গন বা ফাটল মেরামত, বেড়ীবাঁধ নিচু হয়ে গেলে তাতে মাটি দেয়া, ইত্যাদি। • “পানিসম্পদের সঠিক / কার্যকর ব্যবহার” : রক্ষণাবেক্ষণের ফলে অবকাঠামো সমূহ ভাল অবস্থায় থাকলে পানি হয়ে উঠতে পারে সম্পদ। আর তখন এর সঠিক/কার্যকর ব্যবহার মানে পোন্ডারের মানুষের চাহিদামত পানি ব্যবস্থাপনা করা।

Blue Gold Program

বিষয় নম্বর	ব্যাখ্যা
	<ul style="list-style-type: none"> “অবকাঠামোসমূহের রক্ষণাবেক্ষণ সূচু ভাবে করে, যার ফলে এলাকায় কার্যকর পানি ব্যবস্থাপনা হচ্ছে”: সূচু ভাবে রক্ষণাবেক্ষণ করা মানে রক্ষণাবেক্ষণের কাজ যথাযথভাবে বা প্রয়োজনমত করা। ফলে, অবকাঠামোসমূহ ভালমত কাজ করে এবং অবকাঠামোসমূহ ভাল অবস্থায় থাকলে, পোল্ডারের মানুষের চাহিদামত পানি ব্যবস্থাপনা করা সম্ভব হয়।
৪.৩	<ul style="list-style-type: none"> “পানি ব্যবস্থাপনার পদ্ধতিগত উন্নয়ন”: এখানে ‘পদ্ধতিগত উন্নয়ন’-এর কিছু উদাহরণ হল - পানি ব্যবস্থাপনার জন্য উচুজমি-নিচুজমির পানির চাহিদা সমন্বয় করে অবকাঠামো পরিচালনা, উচুজমি ও নিচুজমির মাঝখানে ছোট বাঁধ তৈরি, ফসলের চাহিদার প্রতিলক্ষ্যে অবকাঠামো পরিচালনা, ফসলের মাঠে পানি নেয়ার জন্য নালা কাটা, খাল পরিষ্কার রাখা, ইত্যাদি।
৪.৪	<ul style="list-style-type: none"> “পরিচালন ও রক্ষণাবেক্ষণ সংক্রান্ত দায় দায়িত্ব”: ব্যবস্থাপনাকমিটির ‘পরিচালন ও রক্ষণাবেক্ষণ সংক্রান্ত দায় দায়িত্ব’-এর মধ্যে আছে - এলাকার অবকাঠামোসমূহ কি অবস্থায় আছে নিয়মিত তার খেঁজ খবর রাখা, পানি ব্যবস্থাপনার প্রয়োজন অর্থাৎ এলাকায় কোথায় পানি দরকার আর কোথাকার পানি সরানো দরকার তা নিয়মিতভাবে পর্যবেক্ষণ করা/লক্ষ্য রাখা, অবকাঠামো পরিচালনার জন্য কাউকে দায়িত্ব দেয়া, অবকাঠামোর মেরামত করার প্রয়োজন হলে তার ব্যবস্থা নেয়া, খাল পরিষ্কার করার/ পরিষ্কার রাখার ব্যবস্থা নেয়া, ইত্যাদি।
৪-সা. বি.	<ul style="list-style-type: none"> “সার্বিক বিবেচনায় পানি ব্যবস্থাপনা এবং পরিচালন ও রক্ষণাবেক্ষণের অবস্থা কোন পর্যায়ে”: বিবেচ্য বিষয়ের বিভিন্ন খুঁটিনাটি দিক আলাদা আলাদা না ভেবে, সামগ্রিক বিবেচনায় সেই বিষয়ের অবস্থার মূল্যায়ন করাকে ‘সার্বিক বিবেচনা’ বলা হচ্ছে। এখানে বিবেচনার মূল বিষয় হল - পানি ব্যবস্থাপনা ও পানি ব্যবস্থাপনা অবকাঠামোর পরিচালন ও রক্ষণাবেক্ষণের অবস্থা সার্বিক বিবেচনায় কেমন।